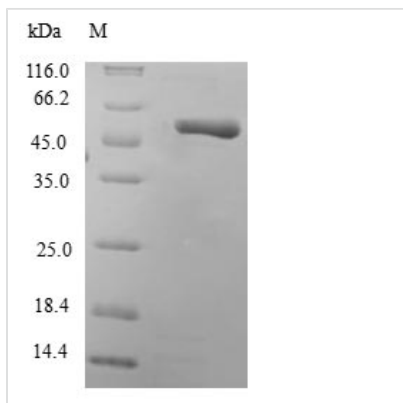




Recombinant Human Phosphoserine phosphatase (PSPH)

Product Code	CSB-EP018938HU
Relevance	Catalyzes the last step in the biosynthesis of serine from carbohydrates. The reaction mechanism proceeds via the formation of a phosphoryl-enzyme intermediates
Abbreviation	Recombinant Human PSPH protein
Storage	The shelf life is related to many factors, storage state, buffer ingredients, storage temperature and the stability of the protein itself. Generally, the shelf life of liquid form is 6 months at -20°C/-80°C. The shelf life of lyophilized form is 12 months at -20°C/-80°C.
Uniprot No.	P78330
Alias	L-3-phosphoserine phosphatase O-phosphoserine phosphohydrolase
Product Type	Recombinant Protein
Immunogen Species	Homo sapiens (Human)
Purity	≥ 90% as determined by SDS-PAGE.
Sequence	MVSHSELRKLKLFYSADAVCFDVDSTVIREEGIDELAKICGVEDAVSEMTRRAMG GAVPFKAALTERLALIQPSREQVQRLIAEQPPHLTPGIRELVSRLQERNVQVFLI SGGFRSIVEHVASKLNIPATNVFANRLKFYFNGEYAGFDETQPTAESGGKGV KLLKEKFHFKKIIMIGDGATDMEACPPADAFIFGGNVIRQQVKDNAKWYITDF VELLGELEE
Research Area	Signal Transduction
Source	E.coli
Target Names	PSPH
Protein Names	Recommended name: Phosphoserine phosphatase Short name= PSP Short name= PSPase EC= 3.1.3.3 Alternative name(s): L-3-phosphoserine phosphatase O-phosphoserine phosphohydrolase
Expression Region	1-225aa
Notes	Repeated freezing and thawing is not recommended. Store working aliquots at 4°C for up to one week.
Tag Info	N-terminal GST-tagged
Mol. Weight	52.0kDa
Protein Length	Full Length
Image	



(Tris-Glycine gel) Discontinuous SDS-PAGE (reduced) with 5% enrichment gel and 15% separation gel.

Reconstitution

We recommend that this vial be briefly centrifuged prior to opening to bring the contents to the bottom. Please reconstitute protein in deionized sterile water to a concentration of 0.1-1.0 mg/mL. We recommend to add 5-50% of glycerol (final concentration) and aliquot for long-term storage at -20°C/-80°C. Our default final concentration of glycerol is 50%. Customers could use it as reference.

Shelf Life

The shelf life is related to many factors, storage state, buffer ingredients, storage temperature and the stability of the protein itself. Generally, the shelf life of liquid form is 6 months at -20°C/-80°C. The shelf life of lyophilized form is 12 months at -20°C/-80°C.