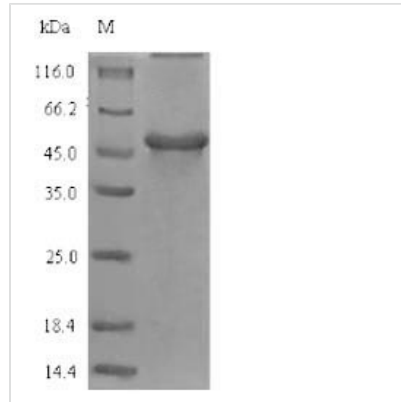


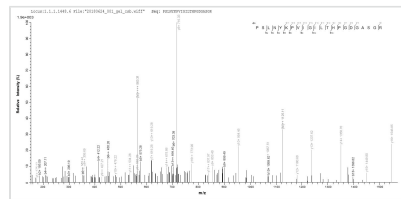


Recombinant Glycine max Gamma-glutamyl hydrolase

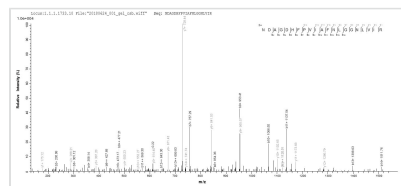
Product Code	CSB-EP009389GGV
Relevance	Hydrolysis of a gamma-glutamyl bond.
Abbreviation	Recombinant Glycine max Gamma-glutamyl hydrolase protein
Storage	The shelf life is related to many factors, storage state, buffer ingredients, storage temperature and the stability of the protein itself. Generally, the shelf life of liquid form is 6 months at -20°C/-80°C. The shelf life of lyophilized form is 12 months at -20°C/-80°C.
Uniprot No.	P93164
Alias	Conjugase GH Gamma-Glu-X carboxypeptidase
Product Type	Recombinant Protein
Immunogen Species	Glycine max (Soybean) (Glycine hispida)
Purity	≥ 90% as determined by SDS-PAGE.
Sequence	ATSHDDHIFLPSQLHDDDSVSCTATDPSLNYKPVIGILTHPGDGASGRLSNATG VSYIAASYVKFVESGGARVIPLIYNESPENLNKLDLVNGVLTGGWAVSGPYL DTLGNIFKKALERNDAGDHFPVIAFNLGGNLVIRIVSEQTDILEPFTASSLPSSLV LWNEANAKGSLFQRFPDLLTQLKTDCLVLHNRHRYAISPRKLQYNTKLSDFFEI LATSGDRDGKTFVSTARGRKYPVTVNLWQPEKNAFEWATSLKAPHTEDAIRV TQSTANFFISEARKSTNTPDAQKVRDSLIIYNYKPTFGGTAGKGYDQVYLFE
Research Area	Signal Transduction
Source	E.coli
Protein Names	Recommended name: Gamma-glutamyl hydrolase EC= 3.4.19.9 Alternative name(s): Conjugase GH Gamma-Glu-X carboxypeptidase
Expression Region	22-342aa
Notes	Repeated freezing and thawing is not recommended. Store working aliquots at 4°C for up to one week.
Tag Info	N-terminal 6xHis-SUMO-tagged
Mol. Weight	51.3kDa
Protein Length	Full Length of Mature Protein
Image	



(Tris-Glycine gel) Discontinuous SDS-PAGE (reduced) with 5% enrichment gel and 15% separation gel.



Based on the SEQUEST from database of E.coli host and target protein, the LC-MS/MS Analysis result of CSB-EP009389GGV could indicate that this peptide derived from E.coli-expressed Glycine max (Soybean) (Glycine hispida) N/A.



Based on the SEQUEST from database of E.coli host and target protein, the LC-MS/MS Analysis result of CSB-EP009389GGV could indicate that this peptide derived from E.coli-expressed Glycine max (Soybean) (Glycine hispida) N/A.

Reconstitution

We recommend that this vial be briefly centrifuged prior to opening to bring the contents to the bottom. Please reconstitute protein in deionized sterile water to a concentration of 0.1-1.0 mg/mL. We recommend to add 5-50% of glycerol (final concentration) and aliquot for long-term storage at -20°C/-80°C. Our default final concentration of glycerol is 50%. Customers could use it as reference.

Shelf Life

The shelf life is related to many factors, storage state, buffer ingredients, storage temperature and the stability of the protein itself.

Generally, the shelf life of liquid form is 6 months at -20°C/-80°C. The shelf life of lyophilized form is 12 months at -20°C/-80°C.