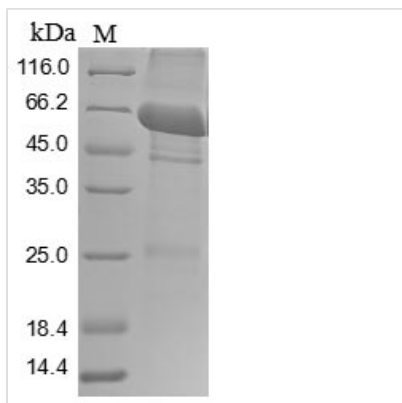




Recombinant Rat Pyruvate kinase PKM (Pkm)

Product Code	CSB-BP018072RA
Relevance	Glycolytic enzyme that catalyzes the transfer of a phosphoryl group from phosphoenolpyruvate (PEP) to ADP, generating ATP. Stimulates POU5F1-mediated transcriptional activation
Abbreviation	Recombinant Rat Pkm protein
Storage	The shelf life is related to many factors, storage state, buffer ingredients, storage temperature and the stability of the protein itself. Generally, the shelf life of liquid form is 6 months at -20°C/-80°C. The shelf life of lyophilized form is 12 months at -20°C/-80°C.
Uniprot No.	P11980
Product Type	Recombinant Protein
Immunogen Species	Rattus norvegicus (Rat)
Purity	Greater than 85% as determined by SDS-PAGE.
Sequence	MPKPDSEAGTAFIQTQQLHAAMADTFLEHMCRLDIDSAPITARNTGIICTIGPAS RSVEMLKEMIKSGMNVARLNFSGHGTHEYHAETIKNVRAATESFASDPILYRPVA VALDTKGPEIRTGLIKGSGTAEVELKKGATLKITLDNAYMEKCDENILWLDYKNI CKVVEVGSKIYVDDGLISLQVKEKGADYLVTEVENGGSLGSKKGVNLPGAAVD LPAVSEKDIQDLKFGVEQDMDVDFASFIRKAADVHEVRKVLGEKGKNIKIISKIE NHEGVRRFDEILEASDGIMVARGDLGIEIPA EKVFLAQKMMIGRCNRAGKPVIC ATQMLESMIKKPRPTRAE GSDVANAVLDGADCIMLSGETAKGDYPLEAVRMQ HLIAREAEAAVFHRLLEELARASSQSTDPLEAMAMGSVEASYKCLAAALIVLT ESGRSAHQVARYRPRAPIIAVTRNPQTARQAHLYRGIFPVLCCKDAVLDAWAED VDLRVNLAMNVGKARGFFKKGDVVIVLTGWRPGSGFTNTMRVVPVP
Research Area	Signal Transduction
Source	Baculovirus
Target Names	Pkm
Protein Names	Pyruvate kinase muscle isozyme Pkm2, Pykm
Expression Region	1-531aa of Isoform M1
Notes	Repeated freezing and thawing is not recommended. Store working aliquots at 4°C for up to one week.
Tag Info	N-terminal 10xHis-tagged and C-terminal Myc-tagged
Mol. Weight	61.8 kDa
Protein Length	Full Length
Image	



(Tris-Glycine gel) Discontinuous SDS-PAGE (reduced) with 5% enrichment gel and 15% separation gel.

Reconstitution

We recommend that this vial be briefly centrifuged prior to opening to bring the contents to the bottom. Please reconstitute protein in deionized sterile water to a concentration of 0.1-1.0 mg/mL. We recommend to add 5-50% of glycerol (final concentration) and aliquot for long-term storage at -20°C/-80°C. Our default final concentration of glycerol is 50%. Customers could use it as reference.

Shelf Life

The shelf life is related to many factors, storage state, buffer ingredients, storage temperature and the stability of the protein itself. Generally, the shelf life of liquid form is 6 months at -20°C/-80°C. The shelf life of lyophilized form is 12 months at -20°C/-80°C.