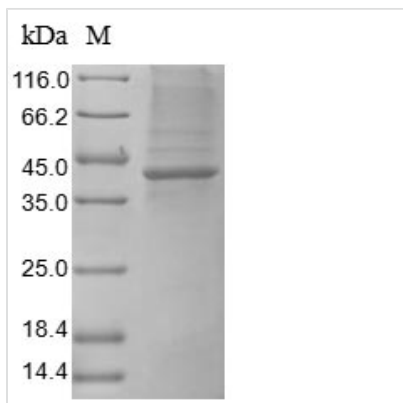




Recombinant Human Heat-stable enterotoxin receptor (GUCY2C), partial

Product Code	CSB-BP010053HU
Abbreviation	Recombinant Human GUCY2C protein, partial
Storage	The shelf life is related to many factors, storage state, buffer ingredients, storage temperature and the stability of the protein itself. Generally, the shelf life of liquid form is 6 months at -20°C/-80°C. The shelf life of lyophilized form is 12 months at -20°C/-80°C.
Uniprot No.	P25092
Product Type	Recombinant Protein
Immunogen Species	Homo sapiens (Human)
Purity	Greater than 85% as determined by SDS-PAGE.
Sequence	SQVSNCHNGSYEISVLMMGNSAFAEPLKNLEDAVNEGLEIVRGRQLQNAGLN VTVNATFMYS DGLIHNSGDCRSSTCEGLDLLRKISNAQRMGCVLIGPSCTYST FQMYLDTELSYPMISAGSFGLSCDYKETLTRLMS PARKLMYFLVNFWKTNLDP FKTYSWSTSYVYKNGTETEDCFWYLNAL EASVSYFSHELGFKVVLRQDKEFQ DILMDHNRKSNVIIMCGGPEFLYK LKGDRAVAEDIVILVDFNDQYFEDNVTAP DYMKNVLVLTSPGNSSLNSSF SRNLSPTKRDFALAYLNGILLFGHMLKIFLEN GENITTPKFAHA FRNLTFEGYDGPVTLDDWGDVDSTMVLLYTSVDTKKYK VLL TYDTHVNKTYPVDMSPTFTWKNSKLPNDITGRGPQ
Research Area	Metabolism
Source	Baculovirus
Target Names	GUCY2C
Protein Names	Recommended name: Heat-stable enterotoxin receptor Short name= STA receptor Short name= hSTAR EC= 4.6.1.2 Alternative name(s): Guanylyl cyclase C Short name= GC-C Intestinal guanylate cyclase
Expression Region	24-430aa
Notes	Repeated freezing and thawing is not recommended. Store working aliquots at 4°C for up to one week.
Tag Info	N-terminal 10xHis-tagged
Mol. Weight	48.5 kDa
Protein Length	Extracellular Domain
Image	



(Tris-Glycine gel) Discontinuous SDS-PAGE (reduced) with 5% enrichment gel and 15% separation gel.

Reconstitution

We recommend that this vial be briefly centrifuged prior to opening to bring the contents to the bottom. Please reconstitute protein in deionized sterile water to a concentration of 0.1-1.0 mg/mL. We recommend to add 5-50% of glycerol (final concentration) and aliquot for long-term storage at -20°C/-80°C. Our default final concentration of glycerol is 50%. Customers could use it as reference.

Shelf Life

The shelf life is related to many factors, storage state, buffer ingredients, storage temperature and the stability of the protein itself. Generally, the shelf life of liquid form is 6 months at -20°C/-80°C. The shelf life of lyophilized form is 12 months at -20°C/-80°C.