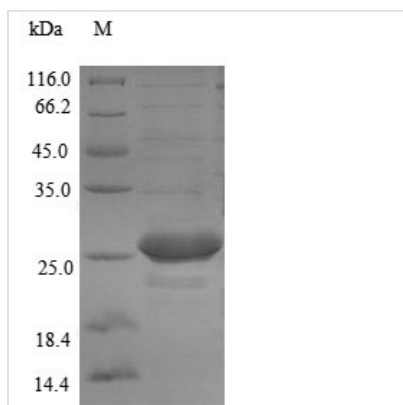




# Recombinant Yersinia pseudotuberculosis serotype I Yop proteins translocation protein M (yscM)

<b>Product Code</b>	CSB-EP300275YAH
<b>Relevance</b>	Belongs to an operon involved in the translocation of Yop proteins across the bacterial membranes or in the specific control of this function.
<b>Abbreviation</b>	Recombinant Yersinia pseudotuberculosis serotype I yscM protein
<b>Storage</b>	The shelf life is related to many factors, storage state, buffer ingredients, storage temperature and the stability of the protein itself. Generally, the shelf life of liquid form is 6 months at -20°C/-80°C. The shelf life of lyophilized form is 12 months at -20°C/-80°C.
<b>Uniprot No.</b>	P69979
<b>Alias</b>	Low calcium response locus protein Q
<b>Product Type</b>	Recombinant Protein
<b>Immunogen Species</b>	Yersinia pseudotuberculosis serotype I (strain IP32953)
<b>Purity</b>	Greater than 90% as determined by SDS-PAGE.
<b>Sequence</b>	MKINTLQSLINQQITQVGHGGQAGRLTETNPLTENSHQISTA EKAFANEVLEHV KNTALSRHDIACLLPRVSNLELKQ GKAGEVIVTGLRTEQLSLSDAKLLLEAAMR QDTAADG
<b>Research Area</b>	Microbiology
<b>Source</b>	E.coli
<b>Target Names</b>	yscM
<b>Protein Names</b>	Recommended name: Yop proteins translocation protein M Alternative name(s): Low calcium response locus protein Q
<b>Expression Region</b>	1-115aa
<b>Notes</b>	Repeated freezing and thawing is not recommended. Store working aliquots at 4°C for up to one week.
<b>Tag Info</b>	N-terminal 6xHis-SUMO-tagged
<b>Mol. Weight</b>	28.4kDa
<b>Protein Length</b>	Full Length

Image



(Tris-Glycine gel) Discontinuous SDS-PAGE (reduced) with 5% enrichment gel and 15% separation gel.

### Reconstitution

We recommend that this vial be briefly centrifuged prior to opening to bring the contents to the bottom. Please reconstitute protein in deionized sterile water to a concentration of 0.1-1.0 mg/mL. We recommend to add 5-50% of glycerol (final concentration) and aliquot for long-term storage at -20°C/-80°C. Our default final concentration of glycerol is 50%. Customers could use it as reference.

### Shelf Life

The shelf life is related to many factors, storage state, buffer ingredients, storage temperature and the stability of the protein itself. Generally, the shelf life of liquid form is 6 months at -20°C/-80°C. The shelf life of lyophilized form is 12 months at -20°C/-80°C.