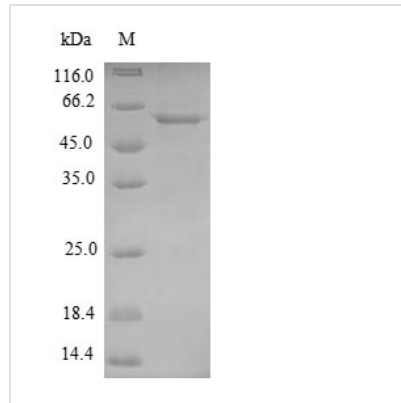


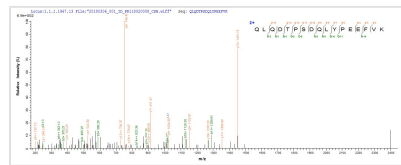


Recombinant Mycoplasma pneumoniae Probable cytosol aminopeptidase (pepA)

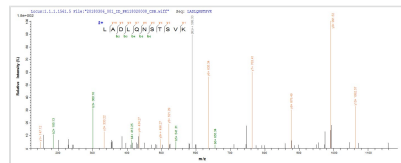
Product Code	CSB-EP302719MLW
Relevance	Presumably involved in the processing and regular turnover of intracellular proteins. Catalyzes the removal of unsubstituted N-terminal amino acids from various peptides (By similarity).
Abbreviation	Recombinant Mycoplasma pneumoniae pepA protein
Storage	The shelf life is related to many factors, storage state, buffer ingredients, storage temperature and the stability of the protein itself. Generally, the shelf life of liquid form is 6 months at -20°C/-80°C. The shelf life of lyophilized form is 12 months at -20°C/-80°C.
Uniprot No.	P75206
Alias	Leucine aminopeptidase (EC:3.4.11.10) Short name: LAP Leucyl aminopeptidase
Product Type	Recombinant Protein
Immunogen Species	Mycoplasma pneumoniae (strain ATCC 29342 / M129)
Purity	Greater than 90% as determined by SDS-PAGE.
Sequence	MKLNKLFDSKTVVFKKSDKYGKSDCCKTKCVEGQIEFGVKIPTDFPAFNRALVT FLKTQKNQLNVDLDSFVELYKAENLCYKTALKVVVASITFCETTPFTMKTEPQK NVEVAVKCDSEHTSLIKEYEVVGNVNMARQLQDTPSDQLYPEEFVKRFEKAA TGLGVKITVLKQADLIKKMGLLLGVNKGSEREARLLVISYNNKKSSETLALVG KGITYDSGGMNIKTGDYMRGMKYDMSGAAIVCSTVLALAKNKVKTNVVAVAL TENLPGPHAQRPDIIQTAYNGKTVEIDNTDAEGRLLVADAI SYAAKDLKATQIID VATLTGLMSYILSTTYTGIFSTCDMAWDAFKKAACCAGEPVWRLPMHPDYLPK LESKLADLQNSTSVKGAGSSRAACFLAEFREGVPLIHCDIASTASIQDLGQGV VRTLYERAAQQAKE
Research Area	Microbiology
Source	E.coli
Target Names	pepA
Protein Names	Recommended name: Probable cytosol aminopeptidase EC= 3.4.11.1 Alternative name(s): Leucine aminopeptidase Short name= LAP EC= 3.4.11.10 Leucyl aminopeptidase
Expression Region	1-445aa
Notes	Repeated freezing and thawing is not recommended. Store working aliquots at 4°C for up to one week.
Tag Info	N-terminal 6xHis-SUMO-tagged
Mol. Weight	64.8kDa


Protein Length
Full Length
Image


(Tris-Glycine gel) Discontinuous SDS-PAGE (reduced) with 5% enrichment gel and 15% separation gel.



Based on the SEQUEST from database of E.coli host and target protein, the LC-MS/MS Analysis result of CSB-EP302719MLW could indicate that this peptide derived from E.coli-expressed Mycoplasma pneumoniae (strain ATCC 29342 / M129) pepA.



Based on the SEQUEST from database of E.coli host and target protein, the LC-MS/MS Analysis result of CSB-EP302719MLW could indicate that this peptide derived from E.coli-expressed Mycoplasma pneumoniae (strain ATCC 29342 / M129) pepA.

Reconstitution

We recommend that this vial be briefly centrifuged prior to opening to bring the contents to the bottom. Please reconstitute protein in deionized sterile water to a concentration of 0.1-1.0 mg/mL. We recommend to add 5-50% of glycerol (final concentration) and aliquot for long-term storage at -20°C/-80°C. Our default final concentration of glycerol is 50%. Customers could use it as reference.

Shelf Life

The shelf life is related to many factors, storage state, buffer ingredients, storage temperature and the stability of the protein itself. Generally, the shelf life of liquid form is 6 months at -20°C/-80°C. The shelf life of lyophilized form is 12 months at -20°C/-80°C.