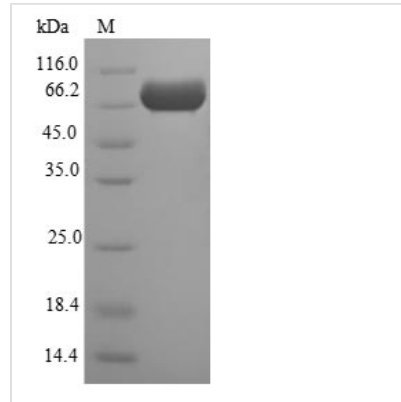




Recombinant Escherichia coli Periplasmic murein peptide-binding protein (mppA)

Product Code	CSB-EP304378ENV
Relevance	Essential for the uptake of the murein peptide L-alanyl-gamma-D-glutamyl-meso-diaminopimelate. Also transports some alpha-linked peptides such as Pro-Phe-Lys with low affinity. The transport is effected by the oligopeptide permease system.
Abbreviation	Recombinant E.coli mppA protein
Storage	The shelf life is related to many factors, storage state, buffer ingredients, storage temperature and the stability of the protein itself. Generally, the shelf life of liquid form is 6 months at -20°C/-80°C. The shelf life of lyophilized form is 12 months at -20°C/-80°C.
Uniprot No.	P77348
Product Type	Recombinant Protein
Immunogen Species	Escherichia coli (strain K12)
Purity	Greater than 90% as determined by SDS-PAGE.
Sequence	AEVPSGTVLAEKQELVRHIKDEPASLDPKAVGLPEIQVIRDLFEGLVNQNEKG EIVPGVATQWKSNDNRIWTFRLRDNKAWADGTPVTAQDFVYSWQRLVDPKTL SPFAWFAALAGINNAQAIIDGKATPDQLGVTAVDAHTLKIQLDKPLPWFVNLTA NFAFFPVQKANVESGKEWTKPGNLINGAYVLKERVVNEKLVVVPNTHYWDN AKTVLQKVTFIPINQESAATKRYLAGDIDITESFPKNMYQKLLKDIPGQVYTPPQ LGTYYYAFNTQKGPTADQVRRLALSMTIDRRLMTEKVLGTGEKPAWHFTPDV TAGFTPEPSPFEQMSQEELNAQAKTLLSAAGYGPQKPLKLTLLYNTSENHQKI AIAVASMWKKNLGVDVKLQNQEWKTYIDSRNTGNFDVIRASWVG DYNEPSTF LTLTSTHSGNISRFNNPAYDKVLAQASTENTVKARNADYNAAEKILMEQAPIA PIYQYTNGRLIKPWLKGYPINNPEDVAYSRTMYIVKH
Research Area	others
Source	E.coli
Target Names	mppA
Protein Names	Recommended name: Periplasmic murein peptide-binding protein
Expression Region	23-537aa
Notes	Repeated freezing and thawing is not recommended. Store working aliquots at 4°C for up to one week.
Tag Info	N-terminal 6xHis-SUMO-tagged
Mol. Weight	73.6kDa
Protein Length	Full Length of Mature Protein
Image	



(Tris-Glycine gel) Discontinuous SDS-PAGE (reduced) with 5% enrichment gel and 15% separation gel.

Reconstitution

We recommend that this vial be briefly centrifuged prior to opening to bring the contents to the bottom. Please reconstitute protein in deionized sterile water to a concentration of 0.1-1.0 mg/mL. We recommend to add 5-50% of glycerol (final concentration) and aliquot for long-term storage at -20°C/-80°C. Our default final concentration of glycerol is 50%. Customers could use it as reference.

Shelf Life

The shelf life is related to many factors, storage state, buffer ingredients, storage temperature and the stability of the protein itself. Generally, the shelf life of liquid form is 6 months at -20°C/-80°C. The shelf life of lyophilized form is 12 months at -20°C/-80°C.