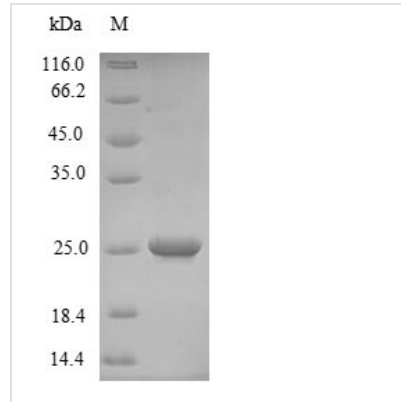




# Recombinant Prunus persica Non-specific lipid-transfer protein 1

<b>Product Code</b>	CSB-EP305877EZK
<b>Relevance</b>	Plant non-specific lipid-transfer proteins transfer phospholipids as well as galactolipids across membranes. May play a role in wax or cutin deposition in the cell walls of expanding epidermal cells and certain secretory tissues.
<b>Abbreviation</b>	Recombinant Prunus persica Non-specific lipid-transfer protein 1 protein
<b>Storage</b>	The shelf life is related to many factors, storage state, buffer ingredients, storage temperature and the stability of the protein itself. Generally, the shelf life of liquid form is 6 months at -20°C/-80°C. The shelf life of lyophilized form is 12 months at -20°C/-80°C.
<b>Uniprot No.</b>	P81402
<b>Alias</b>	Allergen Pru p 1 Major allergen Pru p 3 Allergen: Pru p 3
<b>Product Type</b>	Recombinant Protein
<b>Immunogen Species</b>	Prunus persica (Peach) (Amygdalus persica)
<b>Purity</b>	≥ 90% as determined by SDS-PAGE.
<b>Sequence</b>	ITCGQVSSALAPCIPYVRGGGAVPPACCCNGIRNVNLLARTTPDRQAACNCLKQ LSASVPGVNPNNAAALPGKCGVHIPYKISASTNCATVK
<b>Research Area</b>	Allergen
<b>Source</b>	E.coli
<b>Protein Names</b>	Recommended name: Non-specific lipid-transfer protein 1 Short name= LTP 1 Alternative name(s): Allergen Pru p 1 Major allergen Pru p 3 Allergen= Pru p 3
<b>Expression Region</b>	1-91aa
<b>Notes</b>	Repeated freezing and thawing is not recommended. Store working aliquots at 4°C for up to one week.
<b>Tag Info</b>	N-terminal 6xHis-SUMO-tagged
<b>Mol. Weight</b>	25.2kDa
<b>Protein Length</b>	Full Length
<b>Image</b>	



(Tris-Glycine gel) Discontinuous SDS-PAGE (reduced) with 5% enrichment gel and 15% separation gel.

### Reconstitution

We recommend that this vial be briefly centrifuged prior to opening to bring the contents to the bottom. Please reconstitute protein in deionized sterile water to a concentration of 0.1-1.0 mg/mL. We recommend to add 5-50% of glycerol (final concentration) and aliquot for long-term storage at -20°C/-80°C. Our default final concentration of glycerol is 50%. Customers could use it as reference.

### Shelf Life

The shelf life is related to many factors, storage state, buffer ingredients, storage temperature and the stability of the protein itself. Generally, the shelf life of liquid form is 6 months at -20°C/-80°C. The shelf life of lyophilized form is 12 months at -20°C/-80°C.