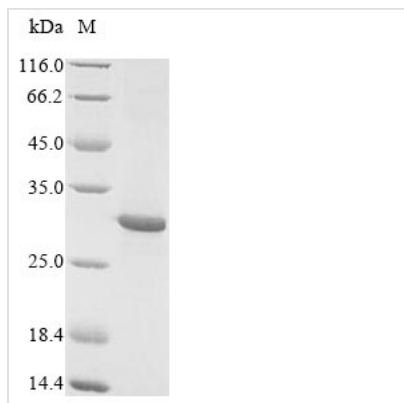


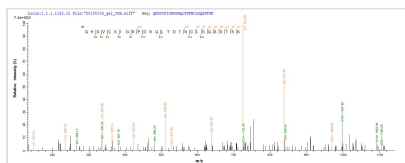


# Recombinant Oncorhynchus keta L-rhamnose-binding lectin CSL3

<b>Product Code</b>	CSB-EP309229OBG
<b>Relevance</b>	L-rhamnose binding lectin. Has hemagglutinating activity towards rabbit erythrocytes, human type A erythrocytes, human type B erythrocytes, human type O erythrocytes and sheep erythrocytes. Hemagglutinating activity is inhibited by smooth-type lipopolysaccharide (LPS) from <i>S.flexneri</i> 1A, <i>A.salmonicida</i> and <i>E.coli</i> K12, but not by rough-type LPS from <i>S.flexneri</i> , <i>E.coli</i> K12 and <i>E.coli</i> EH100. Agglutinates <i>E.coli</i> K12 and <i>B.subtilis</i> .
<b>Abbreviation</b>	Recombinant Oncorhynchus keta L-rhamnose-binding lectin CSL3 protein
<b>Storage</b>	The shelf life is related to many factors, storage state, buffer ingredients, storage temperature and the stability of the protein itself. Generally, the shelf life of liquid form is 6 months at -20°C/-80°C. The shelf life of lyophilized form is 12 months at -20°C/-80°C.
<b>Uniprot No.</b>	P86179
<b>Product Type</b>	Recombinant Protein
<b>Immunogen Species</b>	Oncorhynchus keta (Chum salmon) ( <i>Salmo keta</i> )
<b>Purity</b>	≥ 85% as determined by SDS-PAGE.
<b>Sequence</b>	AISITCEGSDALLQCDGAKIHIKRANYGRRQHDVCSIGRPDNQLTDTNCLSQSS TSKMAERCGGKSECIVPASNFVFGDPCVGTYKYLDTKYSCVQQQETISSIICEG SDSQLLCDRGEIRIQRANYGRRQHDVCSIGRPHQQLKNTNCLSQSTTSKMAE RCDGKRQCIVSVNSVFGDPCVGTYKYLDVAYTCD
<b>Research Area</b>	Others
<b>Source</b>	<i>E.coli</i>
<b>Protein Names</b>	Recommended name: L-rhamnose-binding lectin CSL3
<b>Expression Region</b>	1-195aa
<b>Notes</b>	Repeated freezing and thawing is not recommended. Store working aliquots at 4°C for up to one week.
<b>Tag Info</b>	N-terminal 10xHis-tagged
<b>Mol. Weight</b>	27.0 kDa
<b>Protein Length</b>	Full Length
<b>Image</b>	



(Tris-Glycine gel) Discontinuous SDS-PAGE (reduced) with 5% enrichment gel and 15% separation gel.



Based on the SEQUEST from database of E.coli host and target protein, the LC-MS/MS Analysis result of CSB-EP309229OBG could indicate that this peptide derived from E.coli-expressed Oncorhynchus keta (Chum salmon) (*Salmo keta*) N/A.

### Reconstitution

We recommend that this vial be briefly centrifuged prior to opening to bring the contents to the bottom. Please reconstitute protein in deionized sterile water to a concentration of 0.1-1.0 mg/mL. We recommend to add 5-50% of glycerol (final concentration) and aliquot for long-term storage at -20°C/-80°C. Our default final concentration of glycerol is 50%. Customers could use it as reference.

### Shelf Life

The shelf life is related to many factors, storage state, buffer ingredients, storage temperature and the stability of the protein itself. Generally, the shelf life of liquid form is 6 months at -20°C/-80°C. The shelf life of lyophilized form is 12 months at -20°C/-80°C.