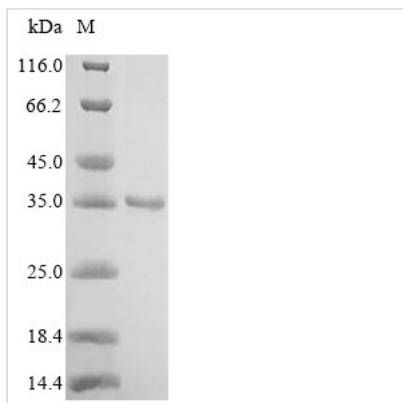




Recombinant Enterobacteria phage T6 Beta-glucosyl-HMC-alpha-glucosyl-transferase

Product Code	CSB-EP313316EEA
Relevance	Transfers a gentiobiosyl-group on a hydroxymethylcytosine residue in DNA. Is involved in a DNA modification process to protects the phage genome against its own nucleases and the host restriction endonuclease system.
Abbreviation	Recombinant Enterobacteria phage T6 Beta-glucosyl-HMC-alpha-glucosyl-transferase protein
Storage	The shelf life is related to many factors, storage state, buffer ingredients, storage temperature and the stability of the protein itself. Generally, the shelf life of liquid form is 6 months at -20°C/-80°C. The shelf life of lyophilized form is 12 months at -20°C/-80°C.
Uniprot No.	Q06718
Product Type	Recombinant Protein
Immunogen Species	Enterobacteria phage T6 (Bacteriophage T6)
Purity	≥ 85% as determined by SDS-PAGE.
Sequence	MIQFVIPSQYRQVGAVALDMFPTDYEPHIVVREHEEKAYNDAYGSRAKIITIPDG VNGIAGTRKAITDMYAGQRIWMIDDDTTIRMSSMRKRDDRRRCVDKVNQLTHE QFYELIQYVEDAMDCGYHGHARLPIFKITSSWGNRENSYGFTNTWYDLGKL TTEQIGYGGKIDLCEDMYAFLNINQGYPHLALFKYLVVSGKAQAPGGCSSIRSN SKHNRALQINREFPEQARWKTSNIEKRKSLGEEDEPLKVLRMCVSRKEKSEA FHKFNAIHPIAVD
Research Area	others
Source	E.coli
Protein Names	Recommended name: Beta-glucosyl-HMC-alpha-glucosyl-transferase EC=2.4.1.-
Expression Region	1-280aa
Notes	Repeated freezing and thawing is not recommended. Store working aliquots at 4°C for up to one week.
Tag Info	N-terminal 6xHis-tagged
Mol. Weight	36.3 kDa
Protein Length	Full Length
Image	



(Tris-Glycine gel) Discontinuous SDS-PAGE (reduced) with 5% enrichment gel and 15% separation gel.

Reconstitution

We recommend that this vial be briefly centrifuged prior to opening to bring the contents to the bottom. Please reconstitute protein in deionized sterile water to a concentration of 0.1-1.0 mg/mL. We recommend to add 5-50% of glycerol (final concentration) and aliquot for long-term storage at -20°C/-80°C. Our default final concentration of glycerol is 50%. Customers could use it as reference.

Shelf Life

The shelf life is related to many factors, storage state, buffer ingredients, storage temperature and the stability of the protein itself. Generally, the shelf life of liquid form is 6 months at -20°C/-80°C. The shelf life of lyophilized form is 12 months at -20°C/-80°C.