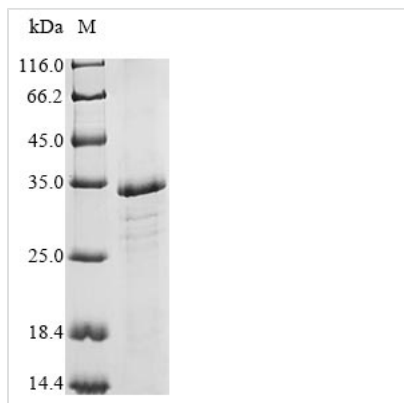




Recombinant Hepatitis delta virus genotype I Large delta antigen

Product Code	CSB-BP313702HFN
Relevance	Following virus entry into host cell, provides nuclear import of HDV RNPs thanks to its nuclear localization signal. Needs co-infection with hepatitis B virus to provide surface proteins, otherwise there is no packaging or budding. Packages the HDV ribonucleoprotein in hepatitis B virus empty particles. Interacts with both HDV genomic RNA and cytoplasmic tail of HBsAg. May inhibit viral RNA replication
Abbreviation	Recombinant Hepatitis delta virus genotype I Large delta antigen protein
Storage	The shelf life is related to many factors, storage state, buffer ingredients, storage temperature and the stability of the protein itself. Generally, the shelf life of liquid form is 6 months at -20°C/-80°C. The shelf life of lyophilized form is 12 months at -20°C/-80°C.
Uniprot No.	P0C6L6
Product Type	Recombinant Protein
Immunogen Species	Hepatitis delta virus genotype I (isolate Italian) (HDV)
Purity	≥ 85% as determined by SDS-PAGE.
Sequence	MSRSESRKNRGGREEILEQWVAGRKKLEELERDLRKTKKKLLKIEDENPWLGNIKGILGKKDKDGEGAPPAKRARTDQMEVDSGPRKRPLRGGFTDKERQDHRRKALENKKKQLSAGGKNLSKEEEEEELRRLTEEDERRRERVAGPPVGGVIPLEGSRGAPGGGFVPSLQGVPEPFSRTGEGLDIRGNRGFPWDILFPADPPFPSPQSC
Research Area	Others
Source	Baculovirus
Protein Names	p27
Expression Region	1-211aa
Notes	Repeated freezing and thawing is not recommended. Store working aliquots at 4°C for up to one week.
Tag Info	N-terminal 10xHis-tagged and C-terminal Myc-tagged
Mol. Weight	27.7 kDa
Protein Length	Full Length of Mature Protein
Image	



(Tris-Glycine gel) Discontinuous SDS-PAGE (reduced) with 5% enrichment gel and 15% separation gel.

Reconstitution

We recommend that this vial be briefly centrifuged prior to opening to bring the contents to the bottom. Please reconstitute protein in deionized sterile water to a concentration of 0.1-1.0 mg/mL. We recommend to add 5-50% of glycerol (final concentration) and aliquot for long-term storage at -20°C/-80°C. Our default final concentration of glycerol is 50%. Customers could use it as reference.

Shelf Life

The shelf life is related to many factors, storage state, buffer ingredients, storage temperature and the stability of the protein itself. Generally, the shelf life of liquid form is 6 months at -20°C/-80°C. The shelf life of lyophilized form is 12 months at -20°C/-80°C.