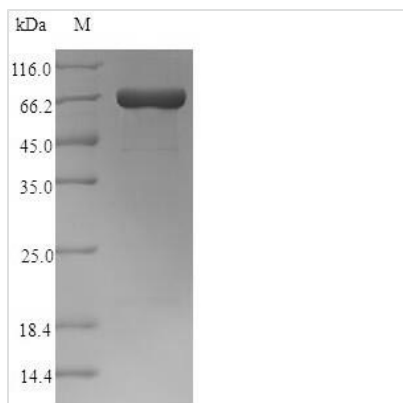


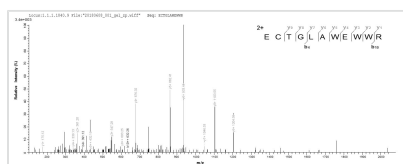


Recombinant Clostridium perfringens Perfringolysin O (pfo)

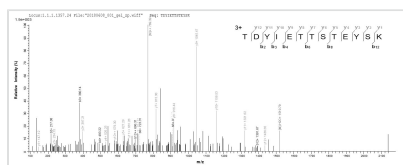
| | |
|--------------------------|---|
| Product Code | CSB-EP314820CMB |
| Relevance | Sulfhydryl-activated toxin that causes cytolysis by forming pores in cholesterol containing host membranes. After binding to target membranes, the protein assembles into a pre-pore complex. A conformation change leads to insertion in the host membrane and formation of an oligomeric pore complex. Cholesterol may be required for binding to host cell membranes, membrane insertion and pore formation. Can be reversibly inactivated by oxidation. |
| Abbreviation | Recombinant Clostridium perfringens Perfringolysin O protein |
| Storage | The shelf life is related to many factors, storage state, buffer ingredients, storage temperature and the stability of the protein itself. Generally, the shelf life of liquid form is 6 months at -20°C/-80°C. The shelf life of lyophilized form is 12 months at -20°C/-80°C. |
| Uniprot No. | P0C2E9 |
| Alias | Theta-toxin Thiol-activated cytolysin |
| Product Type | Recombinant Protein |
| Immunogen Species | Clostridium perfringens (strain 13 / Type A) |
| Purity | Greater than 90% as determined by SDS-PAGE. |
| Sequence | KDITDKNQSIDSGISSLSYNRNEVLASNGDKIESFVPKEGKKTGNKFIVVERQK RSLTTSPVDISIIDS VNDRTYPGALQLADKAFVENRPTILMVKRKPININIDLPLGLK GENSIKVDDPTYGKVS GAIDELVSKWNEKYSSTHTL PARTQYSESMVYSKSQI SSALNVNAKVLENSLGVD FNAV ANNEKKVMILAYKQIF YTVSADLPKNPSDLFD DSVTFNDLKQKGVSN EAPPLMVS NVAYGR TIYVKLETTSSSKDVQAAF KALIKN TDIKNSQQYKDIYENSSFTAVVLGGDAQEHNKVVTKDFDEIRKVIKDNATFSTK NPAYPISYTSVFLKDNSVAAVHNKTDYIETTSTEYSKGKINLDHSGAYVAQFEV AWDEVSYDKEGNEVLTHKTWDGNYQDKTAHYSTVIPLEANARNIRIKARECTG LAWEWWRDVISEYDVPLTNNINVSIWGTTLYPGSSITYN |
| Research Area | Microbiology |
| Source | E.coli |
| Target Names | pfo |
| Protein Names | Recommended name: Perfringolysin O Alternative name(s): Theta-toxin Thiol-activated cytolysin |
| Expression Region | 29-500aa |
| Notes | Repeated freezing and thawing is not recommended. Store working aliquots at 4°C for up to one week. |
| Tag Info | N-terminal 6xHis-SUMO-tagged |
| Mol. Weight | 68.7kDa |


Protein Length
Full Length of Mature Protein
Image


(Tris-Glycine gel) Discontinuous SDS-PAGE (reduced) with 5% enrichment gel and 15% separation gel.



Based on the SEQUEST from database of E.coli host and target protein, the LC-MS/MS Analysis result of CSB-EP314820CMB could indicate that this peptide derived from E.coli-expressed Clostridium perfringens (strain 13 / Type A) pfo.



Based on the SEQUEST from database of E.coli host and target protein, the LC-MS/MS Analysis result of CSB-EP314820CMB could indicate that this peptide derived from E.coli-expressed Clostridium perfringens (strain 13 / Type A) pfo.

Reconstitution

We recommend that this vial be briefly centrifuged prior to opening to bring the contents to the bottom. Please reconstitute protein in deionized sterile water to a concentration of 0.1-1.0 mg/mL. We recommend to add 5-50% of glycerol (final concentration) and aliquot for long-term storage at -20°C/-80°C. Our default final concentration of glycerol is 50%. Customers could use it as reference.

Shelf Life

The shelf life is related to many factors, storage state, buffer ingredients, storage temperature and the stability of the protein itself. Generally, the shelf life of liquid form is 6 months at -20°C/-80°C. The shelf life of lyophilized form is 12 months at -20°C/-80°C.