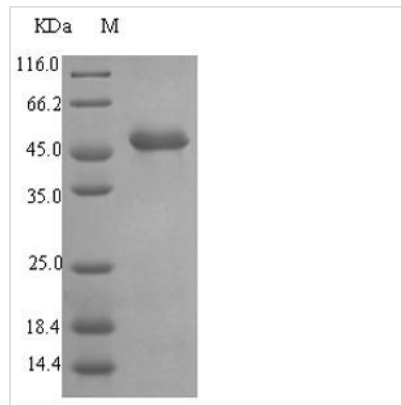




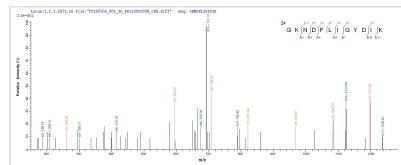
Recombinant *Pseudomonas aeruginosa* Elastase (lasB)

Product Code	CSB-EP318584EZC
Relevance	Cleaves host elastin, collagen, IgG, and several complement components as well as endogenous pro-aminopeptidase (PubMed:11533066). Autocatalyses processing of its pro-peptide (PubMed:9642203, PubMed:1744034). Processes the pro-peptide of pro-chitin-binding protein (cbpD) (PubMed:9642203). Involved in the pathogenesis of <i>P.aeruginosa</i> infections.
Abbreviation	Recombinant <i>Pseudomonas aeruginosa</i> lasB protein
Storage	The shelf life is related to many factors, storage state, buffer ingredients, storage temperature and the stability of the protein itself. Generally, the shelf life of liquid form is 6 months at -20°C/-80°C. The shelf life of lyophilized form is 12 months at -20°C/-80°C.
Uniprot No.	P14756
Alias	Neutral metalloproteinase PAE Pseudolysin Cleaved into the following chain: Pro-elastase
Product Type	Recombinant Protein
Immunogen Species	<i>Pseudomonas aeruginosa</i> (strain ATCC 15692 / PAO1 / 1C / PRS 101 / LMG 12228)
Purity	Greater than 90% as determined by SDS-PAGE.
Sequence	AEAGGPGGNQKIGKYTYGSDYGPLIVNDRCEMDDGNVITVDMNSSTDDSKTT PFRFACPTNTYKQVNGAYSPLNDAHFFGGVVKLYRDWFGTSPLTHKLYMKV HYGRSVENAYWDGTAMLFGDGATMFYPLVSLDVAHEVSHGFTEQNSGLIYR GQSGGMNEAFSDMAGEAAEFYMRGKNDFLIGYDIKKGSGALRYMDQPSRDG RSIDNASQYYNGIDVHHSSGVYNRAFYLLANSPGWDTRKAFEVFDANRYYW TATSNYNSGACGVIRSAQNRNYSAADVTRAFSTVGVTCPSAL
Research Area	Others
Source	<i>E.coli</i>
Target Names	lasB
Expression Region	198-498aa
Notes	Repeated freezing and thawing is not recommended. Store working aliquots at 4°C for up to one week.
Tag Info	N-terminal 6xHis-SUMO-tagged
Mol. Weight	49.1kDa
Protein Length	Full Length of Mature Protein

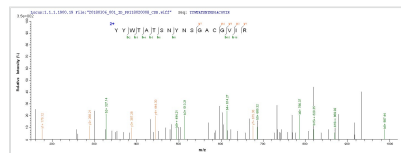
Image



(Tris-Glycine gel) Discontinuous SDS-PAGE (reduced) with 5% enrichment gel and 15% separation gel.



Based on the SEQUEST from database of E.coli host and target protein, the LC-MS/MS Analysis result of CSB-EP318584EZC could indicate that this peptide derived from E.coli-expressed *Pseudomonas aeruginosa* (strain ATCC 15692 / PAO1 / 1C / PRS 101 / LMG 12228) lasB.



Based on the SEQUEST from database of E.coli host and target protein, the LC-MS/MS Analysis result of CSB-EP318584EZC could indicate that this peptide derived from E.coli-expressed *Pseudomonas aeruginosa* (strain ATCC 15692 / PAO1 / 1C / PRS 101 / LMG 12228) lasB.

Reconstitution

We recommend that this vial be briefly centrifuged prior to opening to bring the contents to the bottom. Please reconstitute protein in deionized sterile water to a concentration of 0.1-1.0 mg/mL. We recommend to add 5-50% of glycerol (final concentration) and aliquot for long-term storage at -20°C/-80°C. Our default final concentration of glycerol is 50%. Customers could use it as reference.

Shelf Life

The shelf life is related to many factors, storage state, buffer ingredients, storage temperature and the stability of the protein itself.

Generally, the shelf life of liquid form is 6 months at -20°C/-80°C. The shelf life of lyophilized form is 12 months at -20°C/-80°C.