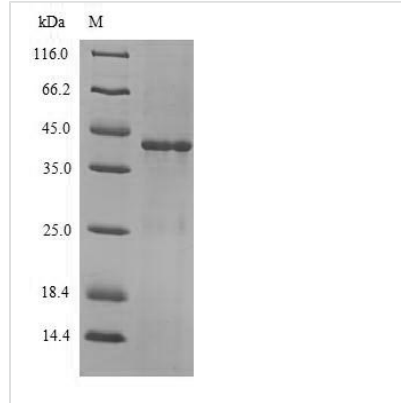


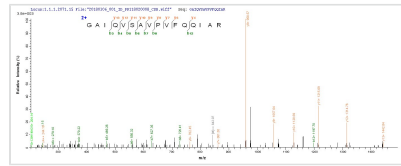


Recombinant Pseudomonas aeruginosa Beta-lactamase OXA-10 (bla)

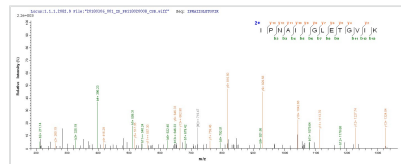
| | |
|--------------------------|---|
| Product Code | CSB-EP321251EZW |
| Relevance | Hydrolyzes both carbenicillin and oxacillin. |
| Abbreviation | Recombinant Pseudomonas aeruginosa bla protein |
| Storage | The shelf life is related to many factors, storage state, buffer ingredients, storage temperature and the stability of the protein itself. Generally, the shelf life of liquid form is 6 months at -20°C/-80°C. The shelf life of lyophilized form is 12 months at -20°C/-80°C. |
| Uniprot No. | P14489 |
| Alias | Beta-lactamase PSE-2 |
| Product Type | Recombinant Protein |
| Immunogen Species | Pseudomonas aeruginosa |
| Purity | ≥ 90% as determined by SDS-PAGE. |
| Sequence | SITENTSWNKEFSAEAVNGVFLCKSSSKSCATNDLARASKEYLPASTFKIPNA IIGLETGVIKNEHQVFKWDGKPRAMKQWERDLTLRGAIQVSAVPVFQIQIAREV GEVRMQKYLKFKFSYGNQNISSGGIDKFWLEGQLRISAVNQVEFLESLYLNKLSA SKENQLIVKEALVTEAAPEYLVHSKTGFGSGVGTESNPGVAWWVGWVEKETEV YFFAFNMDIDNESKLPLRKSIPTKIMESEGIIGG |
| Research Area | Microbiology |
| Source | E.coli |
| Target Names | bla |
| Protein Names | Recommended name: Beta-lactamase OXA-10 EC= 3.5.2.6 Alternative name(s): Beta-lactamase PSE-2 |
| Expression Region | 21-266aa |
| Notes | Repeated freezing and thawing is not recommended. Store working aliquots at 4°C for up to one week. |
| Tag Info | N-terminal 6xHis-SUMO-tagged |
| Mol. Weight | 43.5kDa |
| Protein Length | Full Length of Mature Protein |
| Image | |



(Tris-Glycine gel) Discontinuous SDS-PAGE (reduced) with 5% enrichment gel and 15% separation gel.



Based on the SEQUEST from database of E.coli host and target protein, the LC-MS/MS Analysis result of CSB-EP321251EZW could indicate that this peptide derived from E.coli-expressed *Pseudomonas aeruginosa* bla.



Based on the SEQUEST from database of E.coli host and target protein, the LC-MS/MS Analysis result of CSB-EP321251EZW could indicate that this peptide derived from E.coli-expressed *Pseudomonas aeruginosa* bla.

Reconstitution

We recommend that this vial be briefly centrifuged prior to opening to bring the contents to the bottom. Please reconstitute protein in deionized sterile water to a concentration of 0.1-1.0 mg/mL. We recommend to add 5-50% of glycerol (final concentration) and aliquot for long-term storage at -20°C/-80°C. Our default final concentration of glycerol is 50%. Customers could use it as reference.

Shelf Life

The shelf life is related to many factors, storage state, buffer ingredients, storage temperature and the stability of the protein itself. Generally, the shelf life of liquid form is 6 months at -20°C/-80°C. The shelf life of lyophilized form is 12 months at -20°C/-80°C.