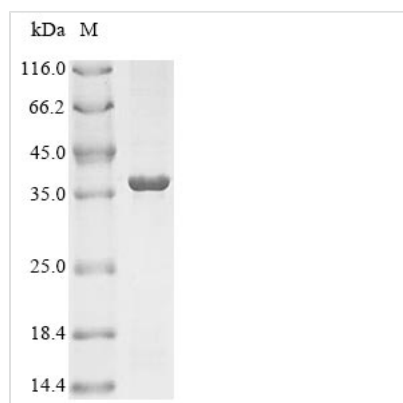




Recombinant *Rhizobium leguminosarum* Nitrogenase iron protein (nifH)

Product Code	CSB-EP321828RKN
Relevance	The key enzymatic reactions in nitrogen fixation are catalyzed by the nitrogenase complex, which has 2 components: the iron protein and the molybdenum-iron protein.
Abbreviation	Recombinant <i>Rhizobium leguminosarum</i> nifH protein, partial
Storage	The shelf life is related to many factors, storage state, buffer ingredients, storage temperature and the stability of the protein itself. Generally, the shelf life of liquid form is 6 months at -20°C/-80°C. The shelf life of lyophilized form is 12 months at -20°C/-80°C.
Uniprot No.	P20623
Product Type	Recombinant Protein
Immunogen Species	<i>Rhizobium leguminosarum</i>
Purity	≥ 85% as determined by SDS-PAGE.
Sequence	MAALRQIAFYGKGGIGKSTTSQNTLAALVDHHVPRIPMIIRIGGYAQ
Research Area	Others
Source	<i>E.coli</i>
Target Names	nifH
Protein Names	Nitrogenase Fe protein Nitrogenase component II Nitrogenase reductase
Expression Region	1-47aa
Notes	Repeated freezing and thawing is not recommended. Store working aliquots at 4°C for up to one week.
Tag Info	N-terminal 10xHis-GST-tagged and C-terminal Myc-tagged
Mol. Weight	35.0 kDa
Protein Length	Full Length

Image



(Tris-Glycine gel) Discontinuous SDS-PAGE (reduced) with 5% enrichment gel and 15% separation gel.



Reconstitution

We recommend that this vial be briefly centrifuged prior to opening to bring the contents to the bottom. Please reconstitute protein in deionized sterile water to a concentration of 0.1-1.0 mg/mL. We recommend to add 5-50% of glycerol (final concentration) and aliquot for long-term storage at -20°C/-80°C. Our default final concentration of glycerol is 50%. Customers could use it as reference.

Shelf Life

The shelf life is related to many factors, storage state, buffer ingredients, storage temperature and the stability of the protein itself.

Generally, the shelf life of liquid form is 6 months at -20°C/-80°C. The shelf life of lyophilized form is 12 months at -20°C/-80°C.