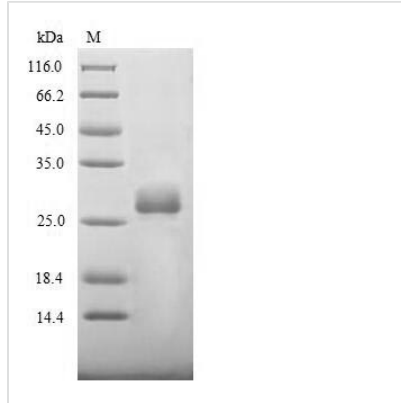


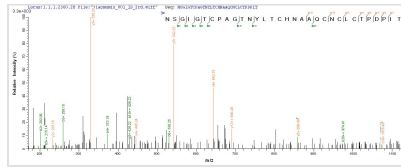


Recombinant Bovine coronavirus Spike glycoprotein (S), partial

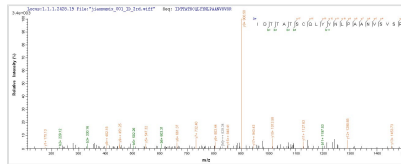
Product Code	CSB-EP322803BJK
Relevance	S1 attaches the virion to the cell membrane by binding to 9-O-acetylated sialic acid containing proteins, initiating the infection. S2 is a class I viral fusion protein. Under the current model, the protein has at least 3 conformational states: pre-fusion native state, pre-hairpin intermediate state, and post-fusion, the coiled coil regions (heptad repeats) assume a trimer-of-hairpins structure, positioning the fusion peptide in close proximity to the C-terminal region of the ectodomain. The formation of this structure appears to drive apposition and subsequent fusion of viral and target cell membranes
Abbreviation	Recombinant Bovine coronavirus S protein, partial
Storage	The shelf life is related to many factors, storage state, buffer ingredients, storage temperature and the stability of the protein itself. Generally, the shelf life of liquid form is 6 months at -20°C/-80°C. The shelf life of lyophilized form is 12 months at -20°C/-80°C.
Uniprot No.	P15777
Product Type	Recombinant Protein
Immunogen Species	Bovine coronavirus (strain Mebus) (BCoV) (BCV)
Purity	Greater than 85% as determined by SDS-PAGE.
Sequence	PNLPDCNIEAWLNDKSVSPSPLNWERKTFSNCFNMSSLMSFIQADSFTCNNID AAKIYGMCFSSITIDKFAIPNGRKVDLQLGNLGYLQSFNYRIDTTATSCQLYYNL PAANVSVSRFNPSTWNRRFGFTEQFVFKPQPVGVFTHHDVVYAQHCFKAPS NFCPCCKLDGSLCVGNPGIDAGYKNSGIGTCPAGTNYLTCHNAAQCNCCLCTP DPIT
Research Area	Microbiology
Source	E.coli
Target Names	S
Protein Names	E2 Peplomer protein
Expression Region	326-540aa
Notes	Repeated freezing and thawing is not recommended. Store working aliquots at 4°C for up to one week.
Tag Info	N-terminal 10xHis-tagged
Mol. Weight	27.2 kDa
Protein Length	Partial
Image	



(Tris-Glycine gel) Discontinuous SDS-PAGE (reduced) with 5% enrichment gel and 15% separation gel.



Based on the SEQUEST from database of E.coli host and target protein, the LC-MS/MS Analysis result of CSB-EP322803BJK could indicate that this peptide derived from E.coli-expressed Bovine coronavirus (strain Mebus) (BCoV) (BCV) S.



Based on the SEQUEST from database of E.coli host and target protein, the LC-MS/MS Analysis result of CSB-EP322803BJK could indicate that this peptide derived from E.coli-expressed Bovine coronavirus (strain Mebus) (BCoV) (BCV) S.

Reconstitution

We recommend that this vial be briefly centrifuged prior to opening to bring the contents to the bottom. Please reconstitute protein in deionized sterile water to a concentration of 0.1-1.0 mg/mL. We recommend to add 5-50% of glycerol (final concentration) and aliquot for long-term storage at -20°C/-80°C. Our default final concentration of glycerol is 50%. Customers could use it as reference.

Shelf Life

The shelf life is related to many factors, storage state, buffer ingredients, storage temperature and the stability of the protein itself. Generally, the shelf life of liquid form is 6 months at -20°C/-80°C. The shelf life of lyophilized form is 12 months at -20°C/-80°C.