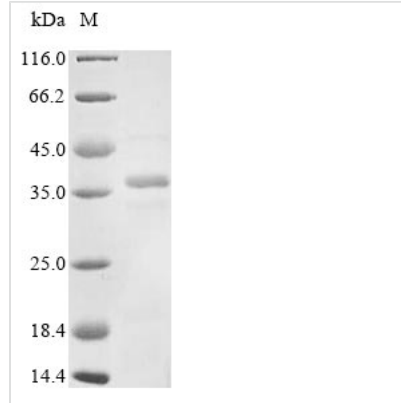


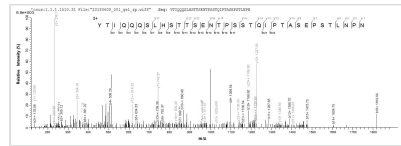


Recombinant Human respiratory syncytial virus B Major surface glycoprotein G (G), partial

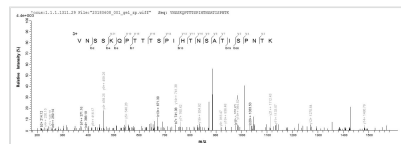
Product Code	CSB-EP323293HPX
Abbreviation	Recombinant Human respiratory syncytial virus B Major surface glycoprotein G, partial
Storage	The shelf life is related to many factors, storage state, buffer ingredients, storage temperature and the stability of the protein itself. Generally, the shelf life of liquid form is 6 months at -20°C/-80°C. The shelf life of lyophilized form is 12 months at -20°C/-80°C.
Uniprot No.	P20896
Product Type	Recombinant Protein
Immunogen Species	Human respiratory syncytial virus B (strain 18537)
Purity	Greater than 85% as determined by SDS-PAGE.
Sequence	HKVTLTTVTVQTIKNHTEKNISTYLTQVPPERVNSSKQPTTTSPIHTNSATISPN TKSETHHTTAQTKGRITSTQTNKPSTKRSKNPPKPKDDYHFEVFNFPVCSI CGNNQLCKSICKTIPSNKPKKKPTIKPTNKPTTKTTNKRDPKTPAKMPKKEIITN PAKKPTLKTTERDTSISQSTVLDITIPKYTIQQQLHSTTSENTPSSTQIPTASEP STLNPN
Research Area	Others
Source	E.coli
Target Names	G
Protein Names	Recommended name: Major surface glycoprotein G Alternative name(s): Attachment glycoprotein G Membrane-bound glycoprotein Short name= mG
Expression Region	67-292aa
Notes	Repeated freezing and thawing is not recommended. Store working aliquots at 4°C for up to one week.
Tag Info	N-terminal 6xHis-tagged
Mol. Weight	29.0 kDa
Protein Length	Partial
Image	



(Tris-Glycine gel) Discontinuous SDS-PAGE (reduced) with 5% enrichment gel and 15% separation gel.



Based on the SEQUEST from database of E.coli host and target protein, the LC-MS/MS Analysis result of CSB-EP323293HPX could indicate that this peptide derived from E.coli-expressed Human respiratory syncytial virus B (strain 18537) G.



Based on the SEQUEST from database of E.coli host and target protein, the LC-MS/MS Analysis result of CSB-EP323293HPX could indicate that this peptide derived from E.coli-expressed Human respiratory syncytial virus B (strain 18537) G.

Reconstitution

We recommend that this vial be briefly centrifuged prior to opening to bring the contents to the bottom. Please reconstitute protein in deionized sterile water to a concentration of 0.1-1.0 mg/mL. We recommend to add 5-50% of glycerol (final concentration) and aliquot for long-term storage at -20°C/-80°C. Our default final concentration of glycerol is 50%. Customers could use it as reference.

Shelf Life

The shelf life is related to many factors, storage state, buffer ingredients, storage temperature and the stability of the protein itself. Generally, the shelf life of liquid form is 6 months at -20°C/-80°C. The shelf life of lyophilized form is 12 months at -20°C/-80°C.