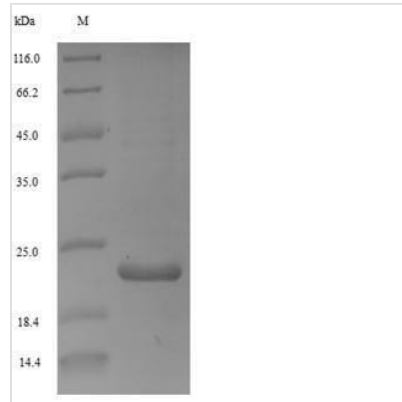




Recombinant Woodchuck hepatitis B virus Protein X (X)

Product Code	CSB-EP323774WAW
Relevance	Multifunctional protein that may modulate protein degradation pathways, apoptosis, transcription, signal transduction, cell cycle progress, and genetic stability by directly or indirectly interacting with hosts factors. Does not seem to be essential for HBV infection. May be directly involved in development of cirrhosis and liver cancer (hepatocellular carcinoma). Most of cytosolic activities involve modulation of cytosolic calcium. Effect on apoptosis is controversial depending on the cell types in which the studies have been conducted
Abbreviation	Recombinant Woodchuck hepatitis B virus protein X
Storage	The shelf life is related to many factors, storage state, buffer ingredients, storage temperature and the stability of the protein itself. Generally, the shelf life of liquid form is 6 months at -20°C/-80°C. The shelf life of lyophilized form is 12 months at -20°C/-80°C.
Uniprot No.	P17401
Alias	HBx Peptide X pX
Product Type	Recombinant Protein
Immunogen Species	Woodchuck hepatitis B virus (isolate 8) (WHV)
Purity	Greater than 90% as determined by SDS-PAGE.
Sequence	MAARLCCHLDSARDVLLLLRPFQSSGSPFPRPAAGSAASSASSPSPSDESD LPLGRLPACFASASGPCCLVFTCADLRTMDSTVNFVSWHANRQLGMPSKDL WTPYIKDQLLTKWEEGSIDPRLSIFVLGGCRHKCMRLL
Research Area	Microbiology
Source	E.coli
Target Names	X
Expression Region	1-141aa
Notes	Repeated freezing and thawing is not recommended. Store working aliquots at 4°C for up to one week.
Tag Info	N-terminal 6xHis-tagged
Mol. Weight	19.2kDa
Protein Length	Full Length
Image	



(Tris-Glycine gel) Discontinuous SDS-PAGE (reduced) with 5% enrichment gel and 15% separation gel.

Reconstitution

We recommend that this vial be briefly centrifuged prior to opening to bring the contents to the bottom. Please reconstitute protein in deionized sterile water to a concentration of 0.1-1.0 mg/mL. We recommend to add 5-50% of glycerol (final concentration) and aliquot for long-term storage at -20°C/-80°C. Our default final concentration of glycerol is 50%. Customers could use it as reference.

Shelf Life

The shelf life is related to many factors, storage state, buffer ingredients, storage temperature and the stability of the protein itself. Generally, the shelf life of liquid form is 6 months at -20°C/-80°C. The shelf life of lyophilized form is 12 months at -20°C/-80°C.