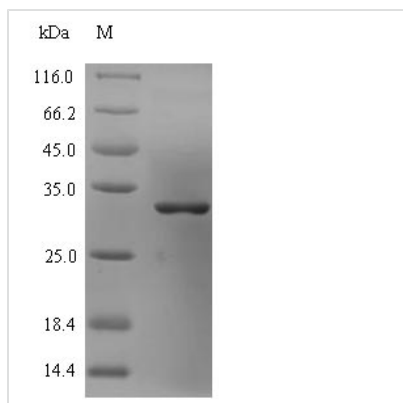




Recombinant Chlamydia pneumoniae Large cysteine-rich periplasmic protein OmcB (omcB), partial

Product Code	CSB-EP326426DRZ
Relevance	In elementary bodies (EBs, the infectious stage, which is able to survive outside the host cell) provides the structural integrity of the outer envelope through disulfide cross-links with the small cysteine-rich protein and the major outer membrane porin. It has been described in publications as the Sarkosyl-insoluble COMC (Chlamydia outer membrane complex), and serves as the functional equivalent of peptidoglycan (By similarity).
Abbreviation	Recombinant Chlamydia pneumoniae omcB protein, partial
Storage	The shelf life is related to many factors, storage state, buffer ingredients, storage temperature and the stability of the protein itself. Generally, the shelf life of liquid form is 6 months at -20°C/-80°C. The shelf life of lyophilized form is 12 months at -20°C/-80°C.
Uniprot No.	P23700
Alias	Large-CRP Alternative name(s): 60 kDa cysteine-rich OMP Short name: 60 kDa CRP 60 kDa outer membrane protein Cysteine-rich outer membrane protein
Product Type	Recombinant Protein
Immunogen Species	Chlamydia pneumoniae (Chlamydophila pneumoniae)
Purity	≥ 90% as determined by SDS-PAGE.
Sequence	SAETKPAPVPMATAKKVRLVRRNKQPVEQKSRGAFCDKEFYPCEEGRCQPVE AQQESCYGRLYSVKVNDDCNVEICQSVPEYATVVGSPYPIEILAIGKKDCVDVVI TQQLPCEAEFVSSDPETTPPTSDGKLVWKIDRLGAGDKCKITVWVKPLKEGC
Research Area	Microbiology
Source	E.coli
Target Names	omcB
Protein Names	Recommended name: Large cysteine-rich periplasmic protein omcB Short name= Large-CRP Alternative name(s): 60 kDa cysteine-rich OMP Short name= 60 kDa CRP 60 kDa outer membrane protein Cysteine-rich outer membrane protein
Expression Region	41-196aa
Notes	Repeated freezing and thawing is not recommended. Store working aliquots at 4°C for up to one week.
Tag Info	N-terminal 6xHis-SUMO-tagged
Mol. Weight	33.3kDa

**Protein Length****Partial****Image**

(Tris-Glycine gel) Discontinuous SDS-PAGE (reduced) with 5% enrichment gel and 15% separation gel.

Reconstitution

We recommend that this vial be briefly centrifuged prior to opening to bring the contents to the bottom. Please reconstitute protein in deionized sterile water to a concentration of 0.1-1.0 mg/mL. We recommend to add 5-50% of glycerol (final concentration) and aliquot for long-term storage at -20°C/-80°C. Our default final concentration of glycerol is 50%. Customers could use it as reference.

Shelf Life

The shelf life is related to many factors, storage state, buffer ingredients, storage temperature and the stability of the protein itself. Generally, the shelf life of liquid form is 6 months at -20°C/-80°C. The shelf life of lyophilized form is 12 months at -20°C/-80°C.