

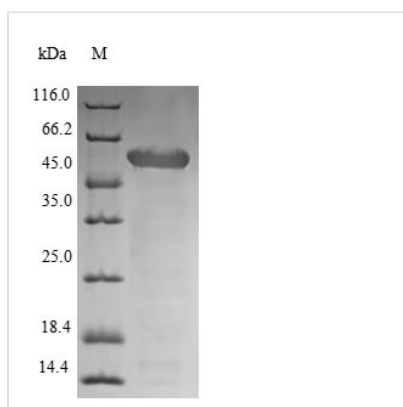


Recombinant Staphylococcus aureus Autolysin (lytA)

| | |
|--------------------------|---|
| Product Code | CSB-EP326479FKZ |
| Relevance | Autolysins are involved in some important biological processes such as cell separation, cell-wall turnover, competence for genetic transformation, formation of the flagella and sporulation. Autolysin strictly depends on the presence of choline-containing cell walls for activity. |
| Abbreviation | Recombinant Staphylococcus aureus lytA protein |
| Storage | The shelf life is related to many factors, storage state, buffer ingredients, storage temperature and the stability of the protein itself. Generally, the shelf life of liquid form is 6 months at -20°C/-80°C. The shelf life of lyophilized form is 12 months at -20°C/-80°C. |
| Uniprot No. | P24556 |
| Alias | N-acetylmuramoyl-L-alanine amidase |
| Product Type | Recombinant Protein |
| Immunogen Species | Staphylococcus aureus |
| Purity | Greater than 90% as determined by SDS-PAGE. |
| Sequence | MQAKLTKNEFIERLKTSEGKQFNVDLWYGFQCFDYANAGWKVLFGLLLKGLG AKDIPFANNFDGLATVYQNTPDFLAQPGDMVVFGSNYGAGYGHVAWVIEATL DYIIVYEQNWLGGGWTDGIEQPAGVGKKLQDDNMLMISLCGLSVRILKVRQRH DQFNLLHKHPKKETAKPQPKAVELKIIKDVVKGYDLPKRGSNPKGIVIHNDAGS KGATAEAYRNGLVNAPLSRLEAGIAHSYVSGNTVWQALDESQVGWHTANQIG NKYYYGIEVCQSMGADNATFLKNEQATFQECARLLKKWGLPANRNTIRLHNEF TSTSCPHRSSVLHTGFDPVTRGLLPEDKRLQLKDYFIKQIRAYMDGKIPVATVS NESSASSNTVKPVASAWKRNKYGTYYMEESARFTNGNQIPITVRKVGPFPLSCP VGYQFQPGGYCDYTEVMLQDGHVWVGYTWEQRYLPIRTWNGSAPPNQIL GDLWGEIS |
| Research Area | others |
| Source | E.coli |
| Target Names | lytA |
| Protein Names | N-acetylmuramoyl-L-alanine amidase |
| Expression Region | 1-481aa |
| Notes | Repeated freezing and thawing is not recommended. Store working aliquots at 4°C for up to one week. |
| Tag Info | N-terminal 6xHis-tagged |
| Mol. Weight | 57.8 kDa |
| Protein Length | Full Length |



Image



(Tris-Glycine gel) Discontinuous SDS-PAGE (reduced) with 5% enrichment gel and 15% separation gel.

Reconstitution

We recommend that this vial be briefly centrifuged prior to opening to bring the contents to the bottom. Please reconstitute protein in deionized sterile water to a concentration of 0.1-1.0 mg/mL. We recommend to add 5-50% of glycerol (final concentration) and aliquot for long-term storage at -20°C/-80°C. Our default final concentration of glycerol is 50%. Customers could use it as reference.

Shelf Life

The shelf life is related to many factors, storage state, buffer ingredients, storage temperature and the stability of the protein itself.

Generally, the shelf life of liquid form is 6 months at -20°C/-80°C. The shelf life of lyophilized form is 12 months at -20°C/-80°C.