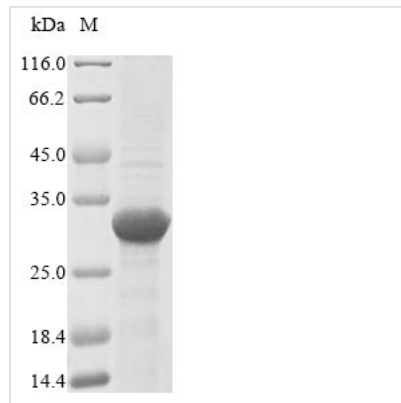




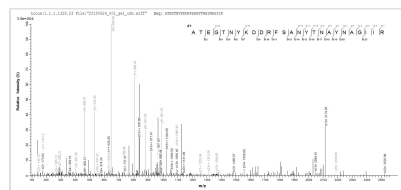
Recombinant Streptomyces globisporus Lysozyme M1 (acm)

Product Code	CSB-EP326536SOH
Abbreviation	Recombinant Streptomyces globisporus acm protein
Storage	The shelf life is related to many factors, storage state, buffer ingredients, storage temperature and the stability of the protein itself. Generally, the shelf life of liquid form is 6 months at -20°C/-80°C. The shelf life of lyophilized form is 12 months at -20°C/-80°C.
Uniprot No.	P25310
Product Type	Recombinant Protein
Immunogen Species	Streptomyces globisporus
Purity	Greater than 85% as determined by SDS-PAGE.
Sequence	DTSGVQGIDVSHWQGSINWSSVKSAGMSFAYIKATEGTNYKDDRFSANYTNA YNAGIIRGAYHFARPNASSGTAQADYFASNGGGWSRDNRTLPGVLDIEHNPS GAMCYGLSTTQMRTWINDFHARYKARTTRDVVIYTTASWWNTCTGSWNGMA AKSPFWVAHWGVSAPTVPSPGFPTWTFWQYSATGRVGGVSGDVDRNKFNGS AARLLALANNTA
Research Area	Others
Source	E.coli
Target Names	acm
Protein Names	Recommended name: Lysozyme M1 EC= 3.2.1.17Alternative name(s): 1,4-beta-N-acetylmuramidase M1
Expression Region	78-294aa
Notes	Repeated freezing and thawing is not recommended. Store working aliquots at 4°C for up to one week.
Tag Info	N-terminal 10xHis-tagged and C-terminal Myc-tagged
Mol. Weight	30.6 kDa
Protein Length	Full Length of Mature Protein

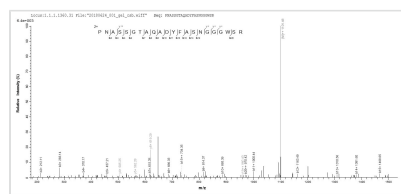
Image



(Tris-Glycine gel) Discontinuous SDS-PAGE (reduced) with 5% enrichment gel and 15% separation gel.



Based on the SEQUEST from database of E.coli host and target protein, the LC-MS/MS Analysis result of CSB-EP326536SOH could indicate that this peptide derived from E.coli-expressed *Streptomyces globisporus* acm.



Based on the SEQUEST from database of E.coli host and target protein, the LC-MS/MS Analysis result of CSB-EP326536SOH could indicate that this peptide derived from E.coli-expressed *Streptomyces globisporus* acm.

Reconstitution

We recommend that this vial be briefly centrifuged prior to opening to bring the contents to the bottom. Please reconstitute protein in deionized sterile water to a concentration of 0.1-1.0 mg/mL. We recommend to add 5-50% of glycerol (final concentration) and aliquot for long-term storage at -20°C/-80°C. Our default final concentration of glycerol is 50%. Customers could use it as reference.

Shelf Life

The shelf life is related to many factors, storage state, buffer ingredients, storage temperature and the stability of the protein itself. Generally, the shelf life of liquid form is 6 months at -20°C/-80°C. The shelf life of lyophilized form is 12 months at -20°C/-80°C.