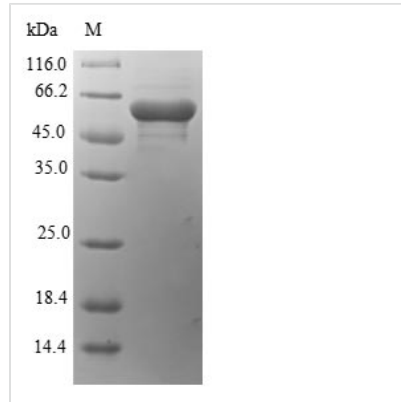




Recombinant Chlamydomonas reinhardtii Autolysin

Product Code	CSB-EP327029DSJ
Relevance	Mediates digestion of the cell walls of the 2 mating type gametes during mating as a necessary prelude to cell fusion. This enzyme acts specifically on the framework proteins (inner wall) of the cell wall, cleaving several model peptides at specific sites.
Abbreviation	Recombinant Chlamydomonas reinhardtii Autolysin protein
Storage	The shelf life is related to many factors, storage state, buffer ingredients, storage temperature and the stability of the protein itself. Generally, the shelf life of liquid form is 6 months at -20°C/-80°C. The shelf life of lyophilized form is 12 months at -20°C/-80°C.
Uniprot No.	P31178
Alias	Gamete lytic enzyme
Product Type	Recombinant Protein
Immunogen Species	Chlamydomonas reinhardtii (Chlamydomonas smithii)
Purity	Greater than 90% as determined by SDS-PAGE.
Sequence	EIYAGKPIDLRTIVYIMDFSSCKLSGWSAPATLTPEKVTSDMLRGASAPTNLA NYYGACSYEKTLFNPDNFLVLPVPCIGGVTPPPRPPRPPRPPRAGSTIS SLSRRNDTYDDWWDLSKYCTASEQQAWERAAEAYAQAIVAQDPNSATGKKL QGILQWRERRRNIYILPPGVKCSWSGYADVTCTSATCSAYVRGYSDTNAMQVI MHEAMHNYGLEHAGRTLEYGDATDVMGDFNKAGKGLLCPNAPNMYRIGWA KPINEPGVAPFQATGAWGNLTAANFTTDPWIRGLVIPAQGTRDDNMIVVNVG AQSTRDGAMKATGAQAYYFSYRIKNTTAGGYDSGLTLDFHKKVLVHAYNGIQS ERVFGFKSNLLDWGPNFQSRSTWTSPFLAYNNGLGGGVRLVVQSTSQTQA VVDICRISENGKELSCDDGIDNDCDGLQDNEDPDCQ
Research Area	others
Source	E.coli
Protein Names	Recommended name: Autolysin EC= 3.4.24.38 Alternative name(s): Gamete lytic enzyme Short name= GLE Gametolysin
Expression Region	184-638aa
Notes	Repeated freezing and thawing is not recommended. Store working aliquots at 4°C for up to one week.
Tag Info	N-terminal 6xHis-SUMO-tagged
Mol. Weight	65.6kDa
Protein Length	Full Length of Mature Protein
Image	



(Tris-Glycine gel) Discontinuous SDS-PAGE (reduced) with 5% enrichment gel and 15% separation gel.

Reconstitution

We recommend that this vial be briefly centrifuged prior to opening to bring the contents to the bottom. Please reconstitute protein in deionized sterile water to a concentration of 0.1-1.0 mg/mL. We recommend to add 5-50% of glycerol (final concentration) and aliquot for long-term storage at -20°C/-80°C. Our default final concentration of glycerol is 50%. Customers could use it as reference.

Shelf Life

The shelf life is related to many factors, storage state, buffer ingredients, storage temperature and the stability of the protein itself. Generally, the shelf life of liquid form is 6 months at -20°C/-80°C. The shelf life of lyophilized form is 12 months at -20°C/-80°C.