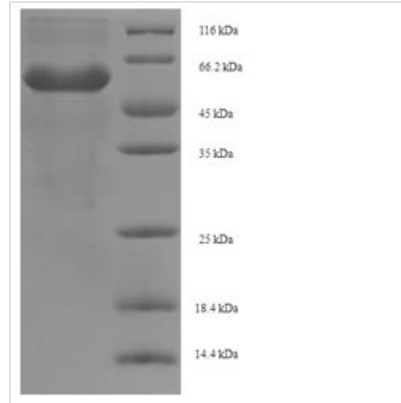




Recombinant *Saccharomyces cerevisiae* Alanine/arginine aminopeptidase (AAP1), partial

Product Code	CSB-EP327747SVG
Relevance	Positive effector of glycogen accumulation. May be involved in nutrient-sensing.
Abbreviation	Recombinant <i>Saccharomyces cerevisiae</i> AAP1 protein, partial
Storage	The shelf life is related to many factors, storage state, buffer ingredients, storage temperature and the stability of the protein itself. Generally, the shelf life of liquid form is 6 months at -20°C/-80°C. The shelf life of lyophilized form is 12 months at -20°C/-80°C.
Uniprot No.	P37898
Product Type	Recombinant Protein
Immunogen Species	<i>Saccharomyces cerevisiae</i> (strain ATCC 204508 / S288c) (Baker's yeast)
Purity	Greater than 90% as determined by SDS-PAGE.
Sequence	MSREVLPNNVTPLHYDITLEPNFRAFTFEGSLKIDLQINDHSINSVQINYLEIDFH SARIEGVNAIEVNKNENQQKATLVFPNGTFENLGPSTAKLEIFSGILNDQMAGFY RAKYTDKVTGETKYMATTQMEATDARRAFPCFDEPNLKATFAVTLVSESFLTH LSNMDVRNETIKEGKKYTTFNTPKMSTYLVAFIVADLRYVESNNFRIPVRVYS TPGDEKFGQFAANLAARTLRFFEDTFNIEYPLPKMDMVAVHEFSAGAMENWG LVTYRVIDLLLDIENSSLDRIQRVAEVIQHELAHQWFGNLVMDWWEGLWLNE GFATWMSWYSCNKFQPEWKVWEQYVTDNLQRALNLDLSLRSSHPIEVPVNNNA DEINQIFDAISYSKG
Research Area	Cell Biology
Source	E.coli
Target Names	AAP1
Protein Names	Recommended name: Alanine/arginine aminopeptidase EC= 3.4.11.-
Expression Region	1-389aa
Notes	Repeated freezing and thawing is not recommended. Store working aliquots at 4°C for up to one week.
Tag Info	N-terminal 6xHis-SUMO-tagged
Mol. Weight	60.8kDa
Protein Length	Partial
Image	



(Tris-Glycine gel) Discontinuous SDS-PAGE (reduced) with 5% enrichment gel and 15% separation gel.

Reconstitution

We recommend that this vial be briefly centrifuged prior to opening to bring the contents to the bottom. Please reconstitute protein in deionized sterile water to a concentration of 0.1-1.0 mg/mL. We recommend to add 5-50% of glycerol (final concentration) and aliquot for long-term storage at -20°C/-80°C. Our default final concentration of glycerol is 50%. Customers could use it as reference.

Shelf Life

The shelf life is related to many factors, storage state, buffer ingredients, storage temperature and the stability of the protein itself. Generally, the shelf life of liquid form is 6 months at -20°C/-80°C. The shelf life of lyophilized form is 12 months at -20°C/-80°C.