

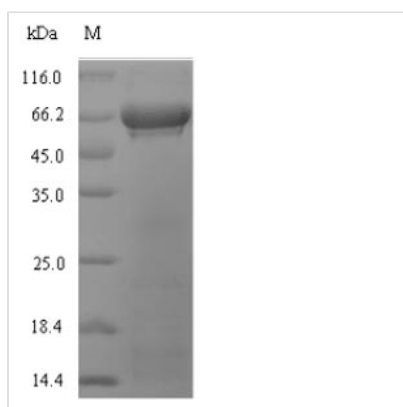


# Recombinant Glycine max Ribulose biphosphate carboxylase large chain (rbcL)

<b>Product Code</b>	CSB-EP328678GGV
<b>Relevance</b>	RuBisCO catalyzes two reactions: the carboxylation of D-ribulose 1,5-bisphosphate, the primary event in carbon dioxide fixation, as well as the oxidative fragmentation of the pentose substrate in the photorespiration process. Both reactions occur simultaneously and in competition at the same active site.
<b>Abbreviation</b>	Recombinant Glycine max rbcL protein
<b>Storage</b>	The shelf life is related to many factors, storage state, buffer ingredients, storage temperature and the stability of the protein itself. Generally, the shelf life of liquid form is 6 months at -20°C/-80°C. The shelf life of lyophilized form is 12 months at -20°C/-80°C.
<b>Uniprot No.</b>	P27066
<b>Alias</b>	RuBisCO large subunit
<b>Product Type</b>	Recombinant Protein
<b>Immunogen Species</b>	Glycine max (Soybean) (Glycine hispida)
<b>Purity</b>	≥ 90% as determined by SDS-PAGE.
<b>Sequence</b>	PQTETKASVGFKAGVKDYKLTYYTPDYETKDTDILAAFRVTPQPGVPPEEAGA AVAAESSTGTWTTVWTDGLTSLDRYKGRCYGLEPVAGEENQYIAYVAYPLDL FEEGSVTNMFTSIVGNVFGFKALRALRLEDLRIPTAYIKTFQGPPHGIQVERDKL NKYGRPLLGCTIKPKLGLSAKNYGRAVYECLRGGLDFTKDDENVNSQPFRMW RDRFLFCAEAIKFSQAETGEIKGHYLNATAGTCEEMMKRAVFARELGVPIVMH DYLTGGFTANTSLAHYCRDNGLLLHIHRAMHAVIDRQKNHGMHFRVLAKALRL SGGDHVHAGTVVGKLEGEREITLGFVDLLRDDFVEKDRSRGIYFTQDWVSLP GVLPVASGGIHVWHMPALTEIFGDDSVLQFGGGTLGHPWGNAPGAVANRVAL EACVQARNEGRDLAREGNEIIREASKWSPELAAACEVWKEIKFEFEAMDTL
<b>Research Area</b>	Signal Transduction
<b>Source</b>	E.coli
<b>Target Names</b>	rbcL
<b>Protein Names</b>	Recommended name: Ribulose biphosphate carboxylase large chain Short name= RuBisCO large subunit EC= 4.1.1.39
<b>Expression Region</b>	3-475aa
<b>Notes</b>	Repeated freezing and thawing is not recommended. Store working aliquots at 4°C for up to one week.
<b>Tag Info</b>	N-terminal 6xHis-SUMO-tagged
<b>Mol. Weight</b>	68.4kDa
<b>Protein Length</b>	Full Length of Mature Protein



## Image



(Tris-Glycine gel) Discontinuous SDS-PAGE (reduced) with 5% enrichment gel and 15% separation gel.

## Reconstitution

We recommend that this vial be briefly centrifuged prior to opening to bring the contents to the bottom. Please reconstitute protein in deionized sterile water to a concentration of 0.1-1.0 mg/mL. We recommend to add 5-50% of glycerol (final concentration) and aliquot for long-term storage at -20°C/-80°C. Our default final concentration of glycerol is 50%. Customers could use it as reference.

## Shelf Life

The shelf life is related to many factors, storage state, buffer ingredients, storage temperature and the stability of the protein itself.

Generally, the shelf life of liquid form is 6 months at -20°C/-80°C. The shelf life of lyophilized form is 12 months at -20°C/-80°C.