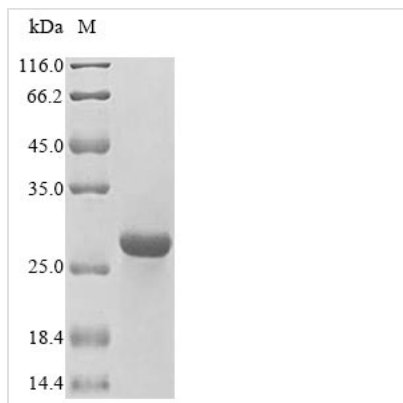




Recombinant Human HLA class II histocompatibility antigen, DM beta chain (HLA-DMB), partial

Product Code	CSB-EP333326HU
Relevance	Plays a critical role in catalyzing the release of class II-associated invariant chain peptide (CLIP) from newly synthesized MHC class II molecules and freeing the peptide binding site for acquisition of antigenic peptides. In B-cells, the interaction between HLA-DM and MHC class II molecules is regulated by HLA-DO.
Abbreviation	Recombinant Human HLA-DMB protein, partial
Storage	The shelf life is related to many factors, storage state, buffer ingredients, storage temperature and the stability of the protein itself. Generally, the shelf life of liquid form is 6 months at -20°C/-80°C. The shelf life of lyophilized form is 12 months at -20°C/-80°C.
Uniprot No.	P28068
Product Type	Recombinant Protein
Immunogen Species	Homo sapiens (Human)
Purity	≥ 85% as determined by SDS-PAGE.
Sequence	GGFVAHVESTCLLDDAGTPKDFTYCISFNKDLLTCWDPEENKMAPCEFGVLNS LANVLSQHLNQQDTLMQRLRNGLQNCATHQPFWGSLTNRTRPPSVQVAKTT PFNTREPVMLACYVWGFYPAEVTITWRKNGKLVMPHSSAHKTAQPNGDWTY QTLSHLALTPSYGDTYTCVVEHIGAPEPILRDWTPGLSPMQTLK
Research Area	Immunology
Source	E.coli
Target Names	HLA-DMB
Protein Names	MHC class II antigen DMB Really interesting new gene 7 protein DMB, RING7
Expression Region	19-218aa
Notes	Repeated freezing and thawing is not recommended. Store working aliquots at 4°C for up to one week.
Tag Info	N-terminal 6xHis-tagged
Mol. Weight	26.4 kDa
Protein Length	Partial
Image	



(Tris-Glycine gel) Discontinuous SDS-PAGE (reduced) with 5% enrichment gel and 15% separation gel.

Reconstitution

We recommend that this vial be briefly centrifuged prior to opening to bring the contents to the bottom. Please reconstitute protein in deionized sterile water to a concentration of 0.1-1.0 mg/mL. We recommend to add 5-50% of glycerol (final concentration) and aliquot for long-term storage at -20°C/-80°C. Our default final concentration of glycerol is 50%. Customers could use it as reference.

Shelf Life

The shelf life is related to many factors, storage state, buffer ingredients, storage temperature and the stability of the protein itself. Generally, the shelf life of liquid form is 6 months at -20°C/-80°C. The shelf life of lyophilized form is 12 months at -20°C/-80°C.