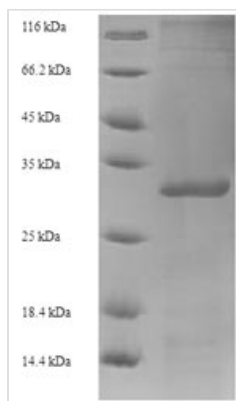




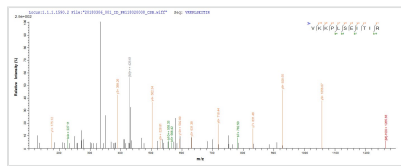
# Recombinant Human papillomavirus type 52 Protein E6 (E6)

<b>Product Code</b>	CSB-EP334186HNY
<b>Relevance</b>	Transcriptional transactivator. Binds double-stranded DNA .
<b>Abbreviation</b>	Recombinant Human papillomavirus type 52 E6 protein
<b>Storage</b>	The shelf life is related to many factors, storage state, buffer ingredients, storage temperature and the stability of the protein itself. Generally, the shelf life of liquid form is 6 months at -20°C/-80°C. The shelf life of lyophilized form is 12 months at -20°C/-80°C.
<b>Uniprot No.</b>	P36814
<b>Product Type</b>	Recombinant Protein
<b>Immunogen Species</b>	Human papillomavirus type 52
<b>Purity</b>	≥ 90% as determined by SDS-PAGE.
<b>Sequence</b>	MFEDPATRPRTLHELCEVLEESVHEIRLQCVQCKKELQRREVYKFLFTDLRIVY RDNNPYGVCIMCLRFLSKISEYRHYQYSLYGKTLLEERVKKPLSEITIRCIICQTPL CPEEKERHVNANKRFHNMGRWTGRCSECWRPRPVTVQV
<b>Research Area</b>	Others
<b>Source</b>	E.coli
<b>Target Names</b>	E6
<b>Protein Names</b>	Recommended name: Protein E6
<b>Expression Region</b>	1-148aa
<b>Notes</b>	Repeated freezing and thawing is not recommended. Store working aliquots at 4°C for up to one week.
<b>Tag Info</b>	N-terminal 6xHis-SUMO-tagged
<b>Mol. Weight</b>	33.9 kDa
<b>Protein Length</b>	Full Length

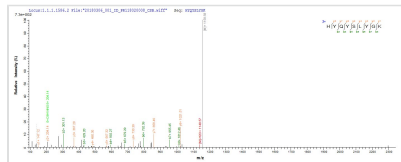
## Image



(Tris-Glycine gel) Discontinuous SDS-PAGE (reduced) with 5% enrichment gel and 15% separation gel.



Based on the SEQUEST from database of E.coli host and target protein, the LC-MS/MS Analysis result of CSB-EP334186HNY could indicate that this peptide derived from E.coli-expressed Human papillomavirus type 52 E6.



Based on the SEQUEST from database of E.coli host and target protein, the LC-MS/MS Analysis result of CSB-EP334186HNY could indicate that this peptide derived from E.coli-expressed Human papillomavirus type 52 E6.

## Reconstitution

We recommend that this vial be briefly centrifuged prior to opening to bring the contents to the bottom. Please reconstitute protein in deionized sterile water to a concentration of 0.1-1.0 mg/mL. We recommend to add 5-50% of glycerol (final concentration) and aliquot for long-term storage at -20°C/-80°C. Our default final concentration of glycerol is 50%. Customers could use it as reference.

## Shelf Life

The shelf life is related to many factors, storage state, buffer ingredients, storage temperature and the stability of the protein itself. Generally, the shelf life of liquid form is 6 months at -20°C/-80°C. The shelf life of lyophilized form is 12 months at -20°C/-80°C.