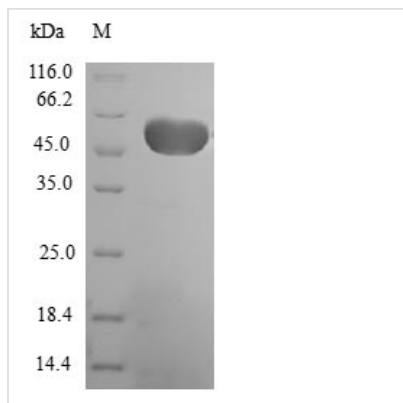




# Recombinant Human Elongation factor 1-beta (EEF1B2)

<b>Product Code</b>	CSB-EP335050HU
<b>Relevance</b>	EF-1-beta and EF-1-delta stimulate the exchange of GDP bound to EF-1-alpha to GTP.
<b>Abbreviation</b>	Recombinant Human EEF1B2 protein
<b>Storage</b>	The shelf life is related to many factors, storage state, buffer ingredients, storage temperature and the stability of the protein itself. Generally, the shelf life of liquid form is 6 months at -20°C/-80°C. The shelf life of lyophilized form is 12 months at -20°C/-80°C.
<b>Uniprot No.</b>	P24534
<b>Product Type</b>	Recombinant Proteins
<b>Immunogen Species</b>	Homo sapiens (Human)
<b>Purity</b>	≥ 90% as determined by SDS-PAGE.
<b>Sequence</b>	MGFGDLKSPAGLQVLNDYLADKSYIEGYVPSQADVAVFEAVSSPPPADLCHAL RWYNHIKSYEKEKASLPGVKKALGKYGPADVEDTTGSGATDSKDDDDIDLFGS DDEEESSEAKRLREERLAQYESKKAKKPALVAKSSILLDVKPWDDDETDMAKLE ECVRSIQADGLVWGSSKLVPGYGIKKLQIQCVVEDDKVGTDMLEEQITAFED YVQSM DVAAFNKI
<b>Research Area</b>	Epigenetics and Nuclear Signaling
<b>Source</b>	E.coli
<b>Target Names</b>	EEF1B2
<b>Protein Names</b>	Recommended name: Elongation factor 1-beta Short name= EF-1-beta
<b>Expression Region</b>	1-225aa
<b>Notes</b>	Repeated freezing and thawing is not recommended. Store working aliquots at 4°C for up to one week.
<b>Tag Info</b>	N-terminal GST-tagged
<b>Mol. Weight</b>	51.8kDa
<b>Protein Length</b>	Full Length

Image



(Tris-Glycine gel) Discontinuous SDS-PAGE (reduced) with 5% enrichment gel and 15% separation gel.

### Shelf Life

The shelf life is related to many factors, storage state, buffer ingredients, storage temperature and the stability of the protein itself.

Generally, the shelf life of liquid form is 6 months at -20°C/-80°C. The shelf life of lyophilized form is 12 months at -20°C/-80°C.