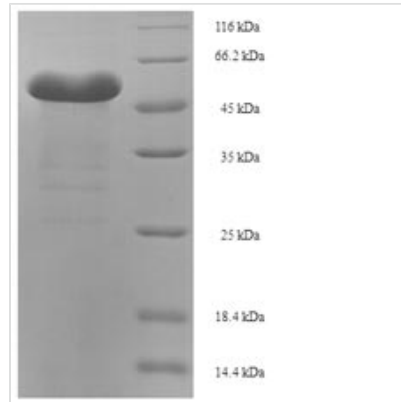




Recombinant Entamoeba histolytica Pyruvate, phosphate dikinase (PPDK), partial

Product Code	CSB-EP336270EKM
Relevance	Catalyzes the reversible phosphorylation of pyruvate and phosphate. In E.histolytica and C.symbiosus, PPDK functions in the direction of ATP synthesis.
Abbreviation	Recombinant Entamoeba histolytica PPDK protein, partial
Storage	The shelf life is related to many factors, storage state, buffer ingredients, storage temperature and the stability of the protein itself. Generally, the shelf life of liquid form is 6 months at -20°C/-80°C. The shelf life of lyophilized form is 12 months at -20°C/-80°C.
Uniprot No.	P37213
Product Type	Recombinant Proteins
Immunogen Species	Entamoeba histolytica
Purity	≥ 90% as determined by SDS-PAGE.
Sequence	MQRVYAFEDGDGTNKKLLGGKGAGLCTMTKIGLPVPQGFVITTEMCKQFIANG NKMPEGLMEEVKKEYQLVEKKSGKVFGEENPLLSVRSGAAMSPGMMMDT ILNLGLNDKTVALAKLTNNERFAYDSYRRFVSLFGKIALNACDEVYDKTLENK KVEKGVKLDTELDANDMKELAQVFIKKTEEFTKQFPVDPYAQLEFAICAVFRS WMGKRAVDYRREFKITPEQADGTAVSVVSMVYGNMGNDSATGVCFTRDPGT GENMFFGEYLKNAQGEDVVAGIRTPQIISKMAEDRDLPGCYEQLLDIRKKLEG YFHEVQDFEFTIERKKLYMLQTRNGK
Research Area	Others
Source	E.coli
Target Names	PPDK
Protein Names	Recommended name: Pyruvate, phosphate dikinase EC= 2.7.9.1Alternative name(s): Pyruvate, orthophosphate dikinase
Expression Region	1-342aa
Notes	Repeated freezing and thawing is not recommended. Store working aliquots at 4°C for up to one week.
Tag Info	N-terminal 6xHis-SUMO-tagged
Mol. Weight	54.4kDa
Protein Length	Partial
Image	



(Tris-Glycine gel) Discontinuous SDS-PAGE (reduced) with 5% enrichment gel and 15% separation gel.

Shelf Life

The shelf life is related to many factors, storage state, buffer ingredients, storage temperature and the stability of the protein itself.

Generally, the shelf life of liquid form is 6 months at -20°C/-80°C. The shelf life of lyophilized form is 12 months at -20°C/-80°C.