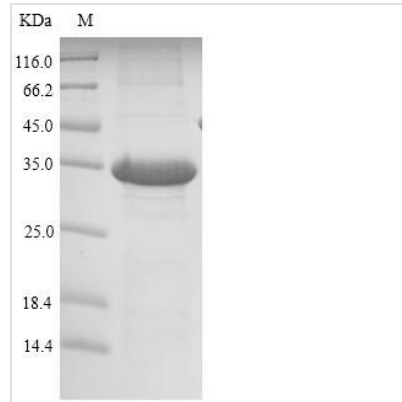




# Recombinant Mouse Lithostathine-1 (Reg1)

<b>Product Code</b>	CSB-EP337329MO
<b>Relevance</b>	Might act as an inhibitor of spontaneous calcium carbonate precipitation.
<b>Abbreviation</b>	Recombinant Mouse Reg1 protein
<b>Storage</b>	The shelf life is related to many factors, storage state, buffer ingredients, storage temperature and the stability of the protein itself. Generally, the shelf life of liquid form is 6 months at -20°C/-80°C. The shelf life of lyophilized form is 12 months at -20°C/-80°C.
<b>Uniprot No.</b>	P43137
<b>Alias</b>	Islet of Langerhans regenerating protein 1 Short name:REG 1 Pancreatic stone protein 1 Short name:PSP Pancreatic thread protein 1 Short name:PTP Regenerating protein 1
<b>Product Type</b>	Recombinant Protein
<b>Immunogen Species</b>	Mus musculus (Mouse)
<b>Purity</b>	Greater than 90% as determined by SDS-PAGE.
<b>Sequence</b>	QEAEEDLPSARISCPEGSNAYSSYCYFTEDRLTWADADLFCQNMNSGYLVS VLSQAEGNFVASLIKESGTTDANVWTGLHDPKRNRRWHWSSGSLFLYKSWA TGSPNSSNRGYCVSLTSNTGYKKWKDDNCDAQYSFVCKFKG
<b>Research Area</b>	Cell Biology
<b>Source</b>	E.coli
<b>Target Names</b>	Reg1
<b>Protein Names</b>	Recommended name: Lithostathine-1 Alternative name(s): Islet of Langerhans regenerating protein 1 Short name= REG 1 Pancreatic stone protein 1 Short name= PSP Pancreatic thread protein 1 Short name= PTP Regeneratin
<b>Expression Region</b>	22-165aa
<b>Notes</b>	Repeated freezing and thawing is not recommended. Store working aliquots at 4°C for up to one week.
<b>Tag Info</b>	N-terminal 6xHis-SUMO-tagged
<b>Mol. Weight</b>	32.2kDa
<b>Protein Length</b>	Full Length of Mature Protein
<b>Image</b>	



(Tris-Glycine gel) Discontinuous SDS-PAGE (reduced) with 5% enrichment gel and 15% separation gel.

### Reconstitution

We recommend that this vial be briefly centrifuged prior to opening to bring the contents to the bottom. Please reconstitute protein in deionized sterile water to a concentration of 0.1-1.0 mg/mL. We recommend to add 5-50% of glycerol (final concentration) and aliquot for long-term storage at -20°C/-80°C. Our default final concentration of glycerol is 50%. Customers could use it as reference.

### Shelf Life

The shelf life is related to many factors, storage state, buffer ingredients, storage temperature and the stability of the protein itself. Generally, the shelf life of liquid form is 6 months at -20°C/-80°C. The shelf life of lyophilized form is 12 months at -20°C/-80°C.