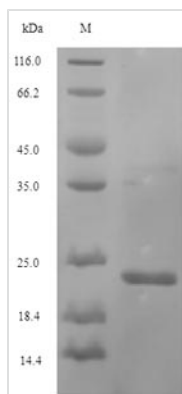




Recombinant Legionella pneumophila Peptidoglycan-associated lipoprotein (pal)

Product Code	CSB-EP340792LNY
Relevance	Very strongly associated with the peptidoglycan.
Abbreviation	Recombinant Legionella pneumophila pal protein
Storage	The shelf life is related to many factors, storage state, buffer ingredients, storage temperature and the stability of the protein itself. Generally, the shelf life of liquid form is 6 months at -20°C/-80°C. The shelf life of lyophilized form is 12 months at -20°C/-80°C.
Uniprot No.	P26493
Alias	19 kDa surface antigen PPL
Product Type	Recombinant Protein
Immunogen Species	Legionella pneumophila
Purity	Greater than 90% as determined by SDS-PAGE.
Sequence	CSKTPGSADGGAAVGDGDATAQQLGQMTHFAGQEPGESYTTQAPHNQLYLF AYDDSTLASKYLPSVNAQAEYLKTHPGARVMIAGHTDERGSREYNVALGERR ADTVAEILRMAGVSRQQIRVVSYGKERPANYGHDEASHAQNRRRVEFIYEATR
Research Area	Others
Source	E.coli
Target Names	pal
Expression Region	22-176aa
Notes	Repeated freezing and thawing is not recommended. Store working aliquots at 4°C for up to one week.
Tag Info	N-terminal 6xHis-tagged
Mol. Weight	20.8kDa
Protein Length	Full Length of Mature Protein

Image



(Tris-Glycine gel) Discontinuous SDS-PAGE (reduced) with 5% enrichment gel and 15% separation gel.



Reconstitution

We recommend that this vial be briefly centrifuged prior to opening to bring the contents to the bottom. Please reconstitute protein in deionized sterile water to a concentration of 0.1-1.0 mg/mL. We recommend to add 5-50% of glycerol (final concentration) and aliquot for long-term storage at -20°C/-80°C. Our default final concentration of glycerol is 50%. Customers could use it as reference.

Shelf Life

The shelf life is related to many factors, storage state, buffer ingredients, storage temperature and the stability of the protein itself. Generally, the shelf life of liquid form is 6 months at -20°C/-80°C. The shelf life of lyophilized form is 12 months at -20°C/-80°C.