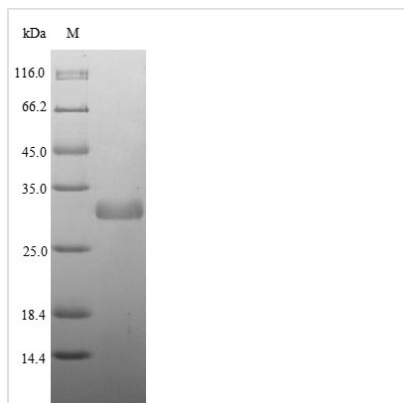




Recombinant *Listeria monocytogenes* serovar 1/2a 1-phosphatidylinositol phosphodiesterase (plcA)

Product Code	CSB-EP341477LPY
Relevance	Cleaves glycosylphosphatidylinositol (GPI) and phosphatidylinositol (PI) anchors but not PI phosphates. Important factor in pathogenesis, PI-PLC activity is present only in virulent listeria species. It may participate in the lysis of the phagolysosomal membrane.
Abbreviation	Recombinant <i>Listeria monocytogenes</i> serovar 1/2a plcA protein
Storage	The shelf life is related to many factors, storage state, buffer ingredients, storage temperature and the stability of the protein itself. Generally, the shelf life of liquid form is 6 months at -20°C/-80°C. The shelf life of lyophilized form is 12 months at -20°C/-80°C.
Uniprot No.	P34024
Product Type	Recombinant Protein
Immunogen Species	<i>Listeria monocytogenes</i> serovar 1/2a (strain ATCC BAA-679 / EGD-e)
Purity	Greater than 85% as determined by SDS-PAGE.
Sequence	FPLGGKAYSLNNWNKPIKNSVTTKQWMSALPDTTNLAALSIPGTHDHTMSYNG DITWTLTKPLAQTQTMSLYQQLEAGIRYIDIRAKDNLNIYHGPIFLNASLSGVLET ITQFLKKNPKETIIMRLKDEQNSNDSFDYRIQPLINIYKDYFYTTTPRTDTSNKIPTL KDVRGKILLSENHTKKPLVINSRKFQMGAPNQVIQDDYNGPSVKTKEIV QTAYQASKADNKLFLNHISATSLTFTPRQYAAALNNKVEQFVLNLTSEKVRGLG ILIMDFPEKQTIKNIKNNKFN
Research Area	others
Source	E.coli
Target Names	plcA
Protein Names	Phosphatidylinositol diacylglycerol-lyase Phosphatidylinositol-specific phospholipase C
Expression Region	23-317aa
Notes	Repeated freezing and thawing is not recommended. Store working aliquots at 4°C for up to one week.
Tag Info	Tag-Free
Mol. Weight	33.5 kDa
Protein Length	Full Length of Mature Protein
Image	



(Tris-Glycine gel) Discontinuous SDS-PAGE (reduced) with 5% enrichment gel and 15% separation gel.

Reconstitution

We recommend that this vial be briefly centrifuged prior to opening to bring the contents to the bottom. Please reconstitute protein in deionized sterile water to a concentration of 0.1-1.0 mg/mL. We recommend to add 5-50% of glycerol (final concentration) and aliquot for long-term storage at -20°C/-80°C. Our default final concentration of glycerol is 50%. Customers could use it as reference.

Shelf Life

The shelf life is related to many factors, storage state, buffer ingredients, storage temperature and the stability of the protein itself. Generally, the shelf life of liquid form is 6 months at -20°C/-80°C. The shelf life of lyophilized form is 12 months at -20°C/-80°C.