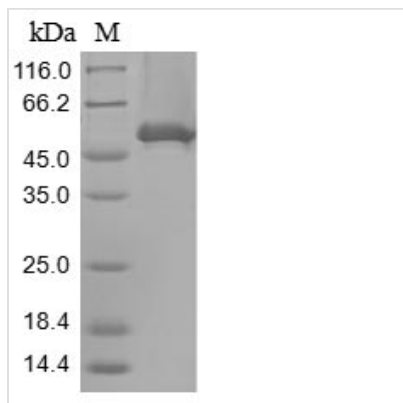




Recombinant Human Large proline-rich protein BAG6 (BAG6), partial

Product Code	CSB-BP342402HU
Abbreviation	Recombinant Human BAG6 protein, partial
Storage	The shelf life is related to many factors, storage state, buffer ingredients, storage temperature and the stability of the protein itself. Generally, the shelf life of liquid form is 6 months at -20°C/-80°C. The shelf life of lyophilized form is 12 months at -20°C/-80°C.
Uniprot No.	P46379
Product Type	Recombinant Protein
Immunogen Species	Homo sapiens (Human)
Purity	Greater than 85% as determined by SDS-PAGE.
Sequence	MEPNDSTSTAVEEPDSLEVLVKTLDSTRTFIVGAQMNVKEFKEHIAASVSIPS EKQRLIYQGRVLQDDKKLQEYNVGGKVIHLVERAPPQTHLPSGASSGTGSASA THGGGSPPGTRGPGASVHDRNANSYVMVGTFLNPSDGSADVHINMEQAPI QSEPRVRLVMAQHMIRDIQTLLSRMECRGGPQPQHSQPPPQPPAVTPEPVAL SSQTSEPVSEAPPREPMEAEVEERAPAQNPELTPGPAPAGPTPAPETNAP NHPSPAHEYVEVLQELQRLESRLQPFLQRYEVLGAAATTDYNNNHEGREEDQ RLINLVG
Research Area	Cancer
Source	Baculovirus
Target Names	BAG6
Protein Names	Recommended name: Large proline-rich protein BAG6 Alternative name(s): BAG family molecular chaperone regulator 6 BCL2-associated athanogene 6 Short name= BAG-6 Short name= BAG6 HLA-B-associated transcript 3 Protein G3
Expression Region	1-321aa
Notes	Repeated freezing and thawing is not recommended. Store working aliquots at 4°C for up to one week.
Tag Info	N-terminal 10xHis-tagged and C-terminal Myc-tagged
Mol. Weight	38.7 kDa
Protein Length	Partial
Image	



(Tris-Glycine gel) Discontinuous SDS-PAGE (reduced) with 5% enrichment gel and 15% separation gel.

Reconstitution

We recommend that this vial be briefly centrifuged prior to opening to bring the contents to the bottom. Please reconstitute protein in deionized sterile water to a concentration of 0.1-1.0 mg/mL. We recommend to add 5-50% of glycerol (final concentration) and aliquot for long-term storage at -20°C/-80°C. Our default final concentration of glycerol is 50%. Customers could use it as reference.

Shelf Life

The shelf life is related to many factors, storage state, buffer ingredients, storage temperature and the stability of the protein itself. Generally, the shelf life of liquid form is 6 months at -20°C/-80°C. The shelf life of lyophilized form is 12 months at -20°C/-80°C.