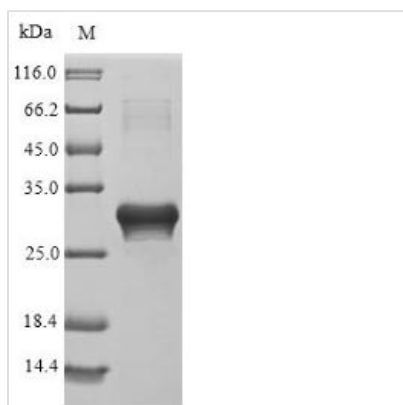




Recombinant *Parietaria judaica* Probable non-specific lipid-transfer protein 2 (LTP2)

Product Code	CSB-EP345923ESB
Relevance	Plant non-specific lipid-transfer proteins transfer phospholipids as well as galactolipids across membranes. May play a role in wax or cutin deposition in the cell walls of expanding epidermal cells and certain secretory tissues.
Abbreviation	Recombinant <i>Parietaria judaica</i> LTP2 protein
Storage	The shelf life is related to many factors, storage state, buffer ingredients, storage temperature and the stability of the protein itself. Generally, the shelf life of liquid form is 6 months at -20°C/-80°C. The shelf life of lyophilized form is 12 months at -20°C/-80°C.
Uniprot No.	P55958
Product Type	Recombinant Protein
Immunogen Species	<i>Parietaria judaica</i> (Pellitory-of-the-wall) (<i>Parietaria diffusa</i>)
Purity	≥ 85% as determined by SDS-PAGE.
Sequence	EEACGKVVQDIMPCLHFVKGEEKEPSKECCSGTKKLSEEVKTTTEQKREACKCI VRATKGISGIKNELVAEVPKKCDIKTTLPPITADFDCSKIQSTIFRGYY
Research Area	others
Source	E.coli
Protein Names	Allergen Par j II Major pollen allergen Par j 2.0101 Protein P2 Allergen: Par j 2.0101
Expression Region	32-133aa
Notes	Repeated freezing and thawing is not recommended. Store working aliquots at 4°C for up to one week.
Tag Info	N-terminal 6xHis-SUMO-tagged
Mol. Weight	27.3 kDa
Protein Length	Full Length of Mature Protein

Image



(Tris-Glycine gel) Discontinuous SDS-PAGE (reduced) with 5% enrichment gel and 15% separation gel.



Reconstitution

We recommend that this vial be briefly centrifuged prior to opening to bring the contents to the bottom. Please reconstitute protein in deionized sterile water to a concentration of 0.1-1.0 mg/mL. We recommend to add 5-50% of glycerol (final concentration) and aliquot for long-term storage at -20°C/-80°C. Our default final concentration of glycerol is 50%. Customers could use it as reference.

Shelf Life

The shelf life is related to many factors, storage state, buffer ingredients, storage temperature and the stability of the protein itself. Generally, the shelf life of liquid form is 6 months at -20°C/-80°C. The shelf life of lyophilized form is 12 months at -20°C/-80°C.