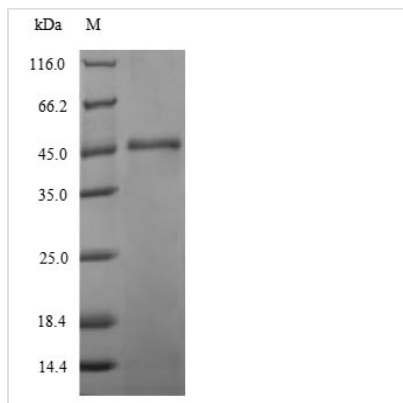




Recombinant Hafnia alvei Intimin (eaeA)

Product Code	CSB-EP346794HAQ
Relevance	Necessary for the production of attaching and effacing lesions on tissue culture cells.
Abbreviation	Recombinant Hafnia alvei eaeA protein
Storage	The shelf life is related to many factors, storage state, buffer ingredients, storage temperature and the stability of the protein itself. Generally, the shelf life of liquid form is 6 months at -20°C/-80°C. The shelf life of lyophilized form is 12 months at -20°C/-80°C.
Uniprot No.	P52869
Alias	Attaching and effacing protein Outer membrane protein
Product Type	Recombinant Protein
Immunogen Species	Hafnia alvei
Purity	Greater than 90% as determined by SDS-PAGE.
Sequence	ITEIKADKTTAVANGKDAVTTYTVKVMKDGKPLSGEEVTFTTTTLGTLSKSTKTN TNGYRKVSLTSANQGKSLVSASVTMPQLMLKLLLEVEFFTQLTIDNGNVEIVGTG AKGKLPNVWLQYGQVNLKANGGNGKYTWYSANPAIASVDPSSGQVTLKDKG ETTITVVSGDKQTAIYTIAMPNSIVSVNSSGRVDYNTANNICKNIKGSLPSSIKEL KDLYDDWGAANKYQHYSQESITAWTLQTSSENKVQGVASTYDLVRKNPLIDKV DIAGNYAYAVCVK
Research Area	Microbiology
Source	E.coli
Target Names	eaeA
Protein Names	Recommended name: Intimin Alternative name(s): Attaching and effacing protein Outer membrane protein
Expression Region	1-280aa
Notes	Repeated freezing and thawing is not recommended. Store working aliquots at 4°C for up to one week.
Tag Info	N-terminal 6xHis-SUMO-tagged
Mol. Weight	46.1kDa
Protein Length	Full Length
Image	



(Tris-Glycine gel) Discontinuous SDS-PAGE (reduced) with 5% enrichment gel and 15% separation gel.

Reconstitution

We recommend that this vial be briefly centrifuged prior to opening to bring the contents to the bottom. Please reconstitute protein in deionized sterile water to a concentration of 0.1-1.0 mg/mL. We recommend to add 5-50% of glycerol (final concentration) and aliquot for long-term storage at -20°C/-80°C. Our default final concentration of glycerol is 50%. Customers could use it as reference.

Shelf Life

The shelf life is related to many factors, storage state, buffer ingredients, storage temperature and the stability of the protein itself. Generally, the shelf life of liquid form is 6 months at -20°C/-80°C. The shelf life of lyophilized form is 12 months at -20°C/-80°C.