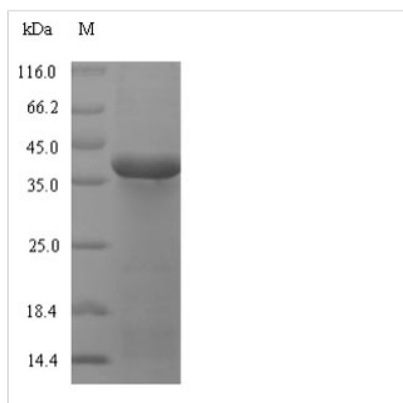




Recombinant Mycoplasma pneumoniae Oligoendopeptidase F homolog (pepF), partial

Product Code	CSB-EP346917MLW
Abbreviation	Recombinant Mycoplasma pneumoniae pepF protein, partial
Storage	The shelf life is related to many factors, storage state, buffer ingredients, storage temperature and the stability of the protein itself. Generally, the shelf life of liquid form is 6 months at -20°C/-80°C. The shelf life of lyophilized form is 12 months at -20°C/-80°C.
Uniprot No.	P54125
Product Type	Recombinant Protein
Immunogen Species	Mycoplasma pneumoniae (strain ATCC 29342 / M129)
Purity	≥ 90% as determined by SDS-PAGE.
Sequence	MNNQYNWNLEVLLNGKSLADNFTELKQLSEQEKALYDGGACFQTKAKFTEFL QLQEKIEVLENRYSNFLSNKHAENSLDKTINDALFQYEMFKSEHALVFVDFEKN LFKHEKVIRAYLQDPALKQYQRDFELVWRNKKHQIDPASQKLLAQISPAWNQA DKIFNVLSTADLNLQPVVYKGYVINAVSDYQSLLLENKDRGLREAAAYKVV
Research Area	Microbiology
Source	E.coli
Target Names	pepF
Protein Names	Recommended name: Oligoendopeptidase F homolog EC= 3.4.24.-
Expression Region	1-210aa
Notes	Repeated freezing and thawing is not recommended. Store working aliquots at 4°C for up to one week.
Tag Info	N-terminal 6xHis-SUMO-tagged
Mol. Weight	40.6kDa
Protein Length	Partial

Image



(Tris-Glycine gel) Discontinuous SDS-PAGE (reduced) with 5% enrichment gel and 15% separation gel.



Reconstitution

We recommend that this vial be briefly centrifuged prior to opening to bring the contents to the bottom. Please reconstitute protein in deionized sterile water to a concentration of 0.1-1.0 mg/mL. We recommend to add 5-50% of glycerol (final concentration) and aliquot for long-term storage at -20°C/-80°C. Our default final concentration of glycerol is 50%. Customers could use it as reference.

Shelf Life

The shelf life is related to many factors, storage state, buffer ingredients, storage temperature and the stability of the protein itself.

Generally, the shelf life of liquid form is 6 months at -20°C/-80°C. The shelf life of lyophilized form is 12 months at -20°C/-80°C.