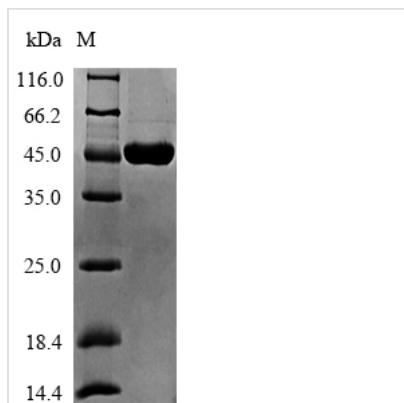




Recombinant *Geobacillus stearothermophilus* ATP-dependent DNA helicase pcrA (pcrA), partial

Product Code	CSB-EP349564GFM
Relevance	DNA helicase. Has a broad nucleotide specificity, even being able to hydrolyze ethenonucleotides, and is able to couple the hydrolysis to unwinding of DNA substrates. It is a 3'-5' helicase but at high protein concentrations it can also displace a substrate with a 5' tail. Preferred substrate being one with both single and double-stranded regions of DNA.
Abbreviation	Recombinant <i>Geobacillus stearothermophilus</i> pcrA protein, partial
Storage	The shelf life is related to many factors, storage state, buffer ingredients, storage temperature and the stability of the protein itself. Generally, the shelf life of liquid form is 6 months at -20°C/-80°C. The shelf life of lyophilized form is 12 months at -20°C/-80°C.
Uniprot No.	P56255
Product Type	Recombinant Protein
Immunogen Species	<i>Geobacillus stearothermophilus</i> (<i>Bacillus stearothermophilus</i>)
Purity	≥ 90% as determined by SDS-PAGE.
Sequence	AHLNKEQQEAVRTTEGPLLIMAGAGSGKTRVLTHRIAYLMAEKHVAPWNILAIT FTNKAAREMRERVQSLGGAEDVWISTFHSVCVRILRRDIDRIGINRNFSLD PTDQLSVMKTILKEKNIDPKKFEPRTILGTISAANKNELLPPEQFAKRASTYYEKV VSDVYQEYQQRLLRNHSLDFDDLIMTTIQLFDRVPDVLHYYQYKFQYIHIDEYQ DTNRAQYTLVKLAERFQNICAVGDADQSIYRWRGADIQNILSFERDYPNAKVI LLEQNYRST
Research Area	Others
Source	<i>E. coli</i>
Target Names	pcrA
Expression Region	10-289aa
Notes	Repeated freezing and thawing is not recommended. Store working aliquots at 4°C for up to one week.
Tag Info	N-terminal 6xHis-SUMO-tagged
Mol. Weight	48.6kDa
Protein Length	Partial
Image	



(Tris-Glycine gel) Discontinuous SDS-PAGE (reduced) with 5% enrichment gel and 15% separation gel.

Reconstitution

We recommend that this vial be briefly centrifuged prior to opening to bring the contents to the bottom. Please reconstitute protein in deionized sterile water to a concentration of 0.1-1.0 mg/mL. We recommend to add 5-50% of glycerol (final concentration) and aliquot for long-term storage at -20°C/-80°C. Our default final concentration of glycerol is 50%. Customers could use it as reference.

Shelf Life

The shelf life is related to many factors, storage state, buffer ingredients, storage temperature and the stability of the protein itself. Generally, the shelf life of liquid form is 6 months at -20°C/-80°C. The shelf life of lyophilized form is 12 months at -20°C/-80°C.