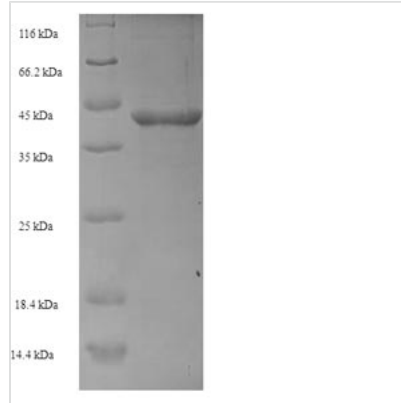


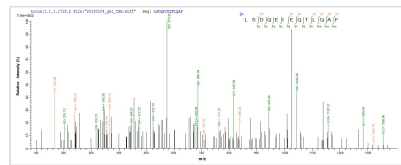


Recombinant Escherichia coli O6:H1 FKBP-type peptidyl-prolyl cis-trans isomerase FkpA (fkpA)

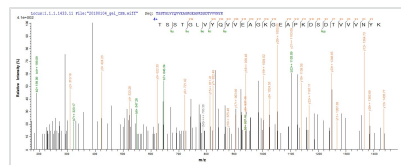
Product Code	CSB-EP355178EGX
Relevance	PPIases accelerate the folding of proteins. It catalyzes the cis-trans isomerization of proline imidic peptide bonds in oligopeptides.
Abbreviation	Recombinant E.coli O6:H1 fkpA protein
Storage	The shelf life is related to many factors, storage state, buffer ingredients, storage temperature and the stability of the protein itself. Generally, the shelf life of liquid form is 6 months at -20°C/-80°C. The shelf life of lyophilized form is 12 months at -20°C/-80°C.
Uniprot No.	P65764
Alias	Rotamase
Product Type	Recombinant Protein
Immunogen Species	Escherichia coli O6:H1 (strain CFT073 / ATCC 700928 / UPEC)
Purity	≥ 90% as determined by SDS-PAGE.
Sequence	AEA AKPATTADSKAAFKNDDQKSAYALGASLG RYMENSLKEQEKLGIKLDKDQ LIAGVQDAFADKSKLSDQEIEQTLQAFEARVKSSAQAKMEKDAADNEAKGKEY REKFAKEKGVKTSSTGLVYQVVEAGKGEAPKDSDTVVVNYKGTLDGKEFDNS YTRGEPLSFRLDGVIPGWTEGLKNIKGGKIKLVIPPELAYGKAGVPGIPPNSTL VFDVELLDVKPAPKADAKPEADAKAADSACK
Research Area	Others
Source	E.coli
Target Names	fkpA
Protein Names	Rotamase
Expression Region	26-270aa
Notes	Repeated freezing and thawing is not recommended. Store working aliquots at 4°C for up to one week.
Tag Info	N-terminal 6xHis-SUMO-tagged
Mol. Weight	42.3 kDa
Protein Length	Full Length of Mature Protein
Image	



(Tris-Glycine gel) Discontinuous SDS-PAGE (reduced) with 5% enrichment gel and 15% separation gel.



Based on the SEQUEST from database of E.coli host and target protein, the LC-MS/MS Analysis result of CSB-EP355178EGX could indicate that this peptide derived from E.coli-expressed Escherichia coli (strain K12) fkpA.



Based on the SEQUEST from database of E.coli host and target protein, the LC-MS/MS Analysis result of CSB-EP355178EGX could indicate that this peptide derived from E.coli-expressed Escherichia coli (strain K12) fkpA.

Reconstitution

We recommend that this vial be briefly centrifuged prior to opening to bring the contents to the bottom. Please reconstitute protein in deionized sterile water to a concentration of 0.1-1.0 mg/mL. We recommend to add 5-50% of glycerol (final concentration) and aliquot for long-term storage at -20°C/-80°C. Our default final concentration of glycerol is 50%. Customers could use it as reference.

Shelf Life

The shelf life is related to many factors, storage state, buffer ingredients, storage temperature and the stability of the protein itself.

Generally, the shelf life of liquid form is 6 months at -20°C/-80°C. The shelf life of lyophilized form is 12 months at -20°C/-80°C.