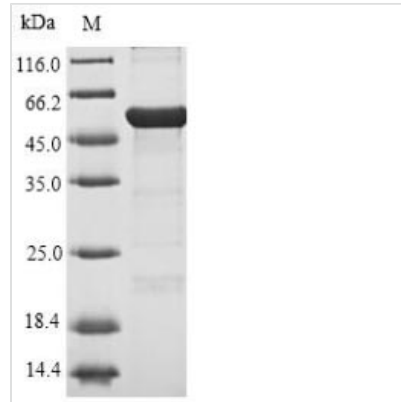




Recombinant *Pseudomonas putida* Metapyrocatechase (xylE)

Product Code	CSB-EP356892FFZ
Relevance	This protein is involved in the pathway toluene degradation, which is part of Xenobiotic degradation. View all proteins of this organism that are known to be involved in the pathway toluene degradation and in Xenobiotic degradation.
Abbreviation	Recombinant <i>Pseudomonas putida</i> xylE protein
Storage	The shelf life is related to many factors, storage state, buffer ingredients, storage temperature and the stability of the protein itself. Generally, the shelf life of liquid form is 6 months at -20°C/-80°C. The shelf life of lyophilized form is 12 months at -20°C/-80°C.
Uniprot No.	P06622
Alias	CatO2ase Catechol 2,3-dioxygenase
Product Type	Recombinant Protein
Immunogen Species	<i>Pseudomonas putida</i> (<i>Arthrobacter siderocapsulatus</i>)
Purity	Greater than 90% as determined by SDS-PAGE.
Sequence	MNKGVMRPGHVQLRVLDMASKALEHYVELLGLIEMDRDDQGRVYLKAWTEVD KFSLVLRADDEPGMDFMGFKVVDLALRQLERDLMAYGCAVEQLPAGELNSC GRRVRFQAPSGHHFELYADKEYTGKWLNDVNPEAWPRDLKGMAAVRFDH ALMYGDELPTYDLFTKVLGFYLAEQVLDENGTRVAQFLSLSTKAHDVAFIHP EKGRLLHVSFHLETWEDLLRAADLISMTDTSIDIGPTRHGLTHGKTIYFFDPSG NRNEVFCGGDYNYPDHKPVTTDQLGKAIFYHDRILNERFMTVLT
Research Area	others
Source	E.coli
Target Names	xylE
Protein Names	Recommended name: Metapyrocatechase Short name= MPC EC= 1.13.11.2 Alternative name(s): CatO2ase Catechol 2,3-dioxygenase
Expression Region	1-307aa
Notes	Repeated freezing and thawing is not recommended. Store working aliquots at 4°C for up to one week.
Tag Info	N-terminal 10xHis-SUMO-tagged and C-terminal Myc-tagged
Mol. Weight	55.2kDa
Protein Length	Full Length
Image	



(Tris-Glycine gel) Discontinuous SDS-PAGE (reduced) with 5% enrichment gel and 15% separation gel.

Reconstitution

We recommend that this vial be briefly centrifuged prior to opening to bring the contents to the bottom. Please reconstitute protein in deionized sterile water to a concentration of 0.1-1.0 mg/mL. We recommend to add 5-50% of glycerol (final concentration) and aliquot for long-term storage at -20°C/-80°C. Our default final concentration of glycerol is 50%. Customers could use it as reference.

Shelf Life

The shelf life is related to many factors, storage state, buffer ingredients, storage temperature and the stability of the protein itself. Generally, the shelf life of liquid form is 6 months at -20°C/-80°C. The shelf life of lyophilized form is 12 months at -20°C/-80°C.