

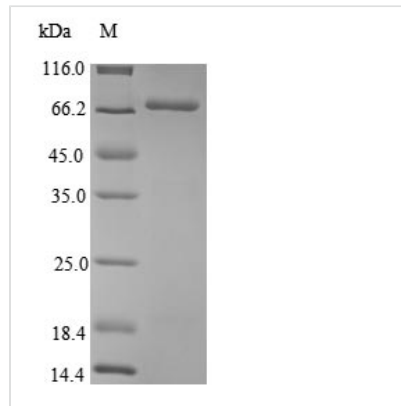


# Recombinant Agrobacterium fabrum Single-strand DNA-binding protein (virE2)

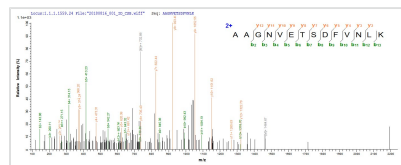
<b>Product Code</b>	CSB-EP357288AYS
<b>Relevance</b>	Involved in DNA transformation; mediates the nuclear uptake of single-stranded DNA copies of the transferred DNA (T-DNA) element. Binds single-stranded but not double-stranded DNA regardless of nucleotide sequence composition.
<b>Abbreviation</b>	Recombinant Agrobacterium fabrum VIRE2 protein
<b>Storage</b>	The shelf life is related to many factors, storage state, buffer ingredients, storage temperature and the stability of the protein itself. Generally, the shelf life of liquid form is 6 months at -20°C/-80°C. The shelf life of lyophilized form is 12 months at -20°C/-80°C.
<b>Uniprot No.</b>	P08062
<b>Product Type</b>	Recombinant Protein
<b>Immunogen Species</b>	Agrobacterium fabrum (strain C58 / ATCC 33970) (Agrobacterium tumefaciens (strain C58))
<b>Purity</b>	≥ 85% as determined by SDS-PAGE.
<b>Sequence</b>	MDPKAEGNGENITETAAGNVETSDFVNLKRQKREGVNSTGMSEIDMTGSQET PEHNMHGSPHTHTDDLGPRLDADMLDSQSSHVSSSAQGNRSEVENELSNLFA KMALPGHDRRTDEYILVRQTGQDKFAGTTKCNLDHLPTKAEFNASCRLYRDG VGNYYPPPLAFERIDIPEQLAAQLHNLEPREQSKQCFQYKLEVWNRHAHAEMGI TGTDIFYQTDKNIKLDNRNYKLRPEDRYIQTEKYGRREIQKRYEHQFQAGSLLPD ILIKTPQNDIHFSYRFAGDAYANKRFEEFERAIKTKYGS DTEIKLKS KSGIMHDS KYLESWERGSADIRFAEFAGENRAHNKQFPAATVNMGRQPDGQGGMTRDR HVSVDYLLQNLPNPWTQALKEGKLWDRVQVLARDGNRYMSPSRLEYS DPE HFTQLMDQVGLPVSMGRQSHANSVKFEQFDRQAAVIVADGPNLREVPDLSPE KLQQLSQKDVLIADRNEKGQRTGTYTNVVEYERLMMKLPSDAAQLLAEP SDR YSRAFVRPEPALPPISDSRRTYESRPRGPTVNSL
<b>Research Area</b>	Others
<b>Source</b>	E.coli
<b>Target Names</b>	VIRE2
<b>Protein Names</b>	63.5KDA virulence protein
<b>Expression Region</b>	1-556aa
<b>Notes</b>	Repeated freezing and thawing is not recommended. Store working aliquots at 4°C for up to one week.
<b>Tag Info</b>	N-terminal 10xHis-tagged and C-terminal Myc-tagged
<b>Mol. Weight</b>	70.3 kDa
<b>Protein Length</b>	Full Length



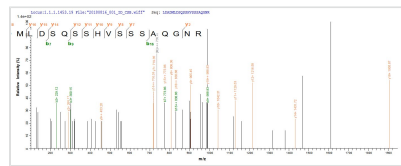
## Image



(Tris-Glycine gel) Discontinuous SDS-PAGE (reduced) with 5% enrichment gel and 15% separation gel.



Based on the SEQUEST from database of E.coli host and target protein, the LC-MS/MS Analysis result of CSB-EP357288AYS could indicate that this peptide derived from E.coli-expressed *Agrobacterium fabrum* (strain C58 / ATCC 33970) (*Agrobacterium tumefaciens* (strain C58)) VIRE2.



Based on the SEQUEST from database of E.coli host and target protein, the LC-MS/MS Analysis result of CSB-EP357288AYS could indicate that this peptide derived from E.coli-expressed *Agrobacterium fabrum* (strain C58 / ATCC 33970) (*Agrobacterium tumefaciens* (strain C58)) VIRE2.

## Reconstitution

We recommend that this vial be briefly centrifuged prior to opening to bring the contents to the bottom. Please reconstitute protein in deionized sterile water to a concentration of 0.1-1.0 mg/mL. We recommend to add 5-50% of glycerol (final concentration) and aliquot for long-term storage at -20°C/-80°C. Our default final concentration of glycerol is 50%. Customers could use it as reference.

## Shelf Life

The shelf life is related to many factors, storage state, buffer ingredients, storage temperature and the stability of the protein itself.

Generally, the shelf life of liquid form is 6 months at -20°C/-80°C. The shelf life of lyophilized form is 12 months at -20°C/-80°C.