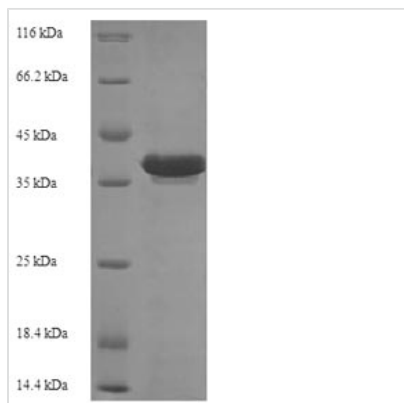




Recombinant Escherichia coli Recombination protein RecR (recR)

Product Code	CSB-EP358976ENV
Relevance	May play a role in DNA repair. It seems to be involved in an RecBC-independent recombinational process of DNA repair. It may act with RecF and RecO.
Abbreviation	Recombinant E.coli recR protein
Storage	The shelf life is related to many factors, storage state, buffer ingredients, storage temperature and the stability of the protein itself. Generally, the shelf life of liquid form is 6 months at -20°C/-80°C. The shelf life of lyophilized form is 12 months at -20°C/-80°C.
Uniprot No.	P0A7H6
Product Type	Recombinant Protein
Immunogen Species	Escherichia coli (strain K12)
Purity	≥ 90% as determined by SDS-PAGE.
Sequence	MQTSPLLTQLMEALRCLPGVGPKSAQRMAFTLLQRDRSGGMRLAQALTRAM SEIGHCADCRTFTEQEVCNICSNPRRQENGQICVVESPADIIAIEQTGQFSGR YFVLMGHLSPLDGIGPDDIGLDRLEQRLAEEKITEVILATNPTVEGEATANYIAEL CAQYDVEASRIAHGVPVGGEELEMVDGTTLSHSLAGRHKIRF
Research Area	Others
Source	E.coli
Target Names	recR
Protein Names	Recommended name: Recombination protein RecR
Expression Region	1-201aa
Notes	Repeated freezing and thawing is not recommended. Store working aliquots at 4°C for up to one week.
Tag Info	N-terminal 6xHis-SUMO-tagged
Mol. Weight	38.0kDa
Protein Length	Full Length
Image	



(Tris-Glycine gel) Discontinuous SDS-PAGE (reduced) with 5% enrichment gel and 15% separation gel.

Reconstitution

We recommend that this vial be briefly centrifuged prior to opening to bring the contents to the bottom. Please reconstitute protein in deionized sterile water to a concentration of 0.1-1.0 mg/mL. We recommend to add 5-50% of glycerol (final concentration) and aliquot for long-term storage at -20°C/-80°C. Our default final concentration of glycerol is 50%. Customers could use it as reference.

Shelf Life

The shelf life is related to many factors, storage state, buffer ingredients, storage temperature and the stability of the protein itself. Generally, the shelf life of liquid form is 6 months at -20°C/-80°C. The shelf life of lyophilized form is 12 months at -20°C/-80°C.