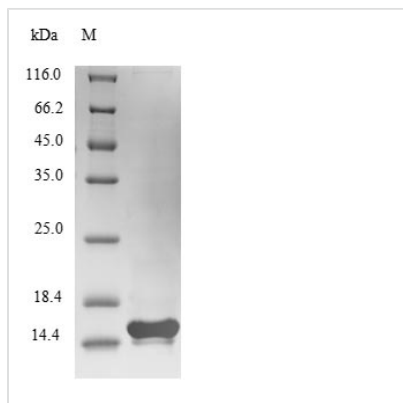




# Recombinant Vibrio cholerae serotype O1 Cholera enterotoxin subunit B (ctxB)

<b>Product Code</b>	CSB-EP360704VEX
<b>Relevance</b>	The B subunit pentameric ring directs the A subunit to its target by binding to the GM1 gangliosides present on the surface of the intestinal epithelial cells. It can bind five GM1 gangliosides. It has no toxic activity by itself.
<b>Abbreviation</b>	Recombinant Vibrio cholerae serotype O1 ctxB protein
<b>Storage</b>	The shelf life is related to many factors, storage state, buffer ingredients, storage temperature and the stability of the protein itself. Generally, the shelf life of liquid form is 6 months at -20°C/-80°C. The shelf life of lyophilized form is 12 months at -20°C/-80°C.
<b>Uniprot No.</b>	P01556
<b>Product Type</b>	Recombinant Protein
<b>Immunogen Species</b>	Vibrio cholerae serotype O1 (strain ATCC 39315 / El Tor Inaba N16961)
<b>Purity</b>	≥ 90% as determined by SDS-PAGE.
<b>Sequence</b>	TPQKITDLCAEYHNTQIYTLNDKIFSYTESLAGKREMAITFKNGAIFQVEVPGS QHIDSQKKAIERMKDTRLRIAYLTEAKVEKLCVWNNKTPHAIAAISMAN
<b>Research Area</b>	Microbiology
<b>Source</b>	E.coli
<b>Target Names</b>	ctxB
<b>Protein Names</b>	Cholera enterotoxin B chain Cholera enterotoxin gamma chain Cholera toxin B subunit
<b>Expression Region</b>	22-124aa
<b>Notes</b>	Repeated freezing and thawing is not recommended. Store working aliquots at 4°C for up to one week.
<b>Tag Info</b>	N-terminal 6xHis-tagged
<b>Mol. Weight</b>	15.6kDa
<b>Protein Length</b>	Full Length of Mature Protein
<b>Image</b>	



(Tris-Glycine gel) Discontinuous SDS-PAGE (reduced) with 5% enrichment gel and 15% separation gel.

### Reconstitution

We recommend that this vial be briefly centrifuged prior to opening to bring the contents to the bottom. Please reconstitute protein in deionized sterile water to a concentration of 0.1-1.0 mg/mL. We recommend to add 5-50% of glycerol (final concentration) and aliquot for long-term storage at -20°C/-80°C. Our default final concentration of glycerol is 50%. Customers could use it as reference.

### Shelf Life

The shelf life is related to many factors, storage state, buffer ingredients, storage temperature and the stability of the protein itself. Generally, the shelf life of liquid form is 6 months at -20°C/-80°C. The shelf life of lyophilized form is 12 months at -20°C/-80°C.