



Recombinant Escherichia coli DNA helicase II (uvrD)

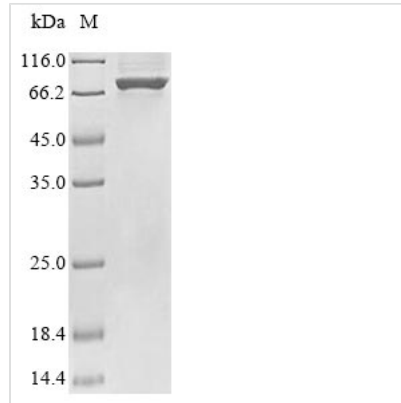
| | |
|--------------------------|--|
| Product Code | CSB-EP360936ENV |
| Relevance | A helicase with DNA-dependent ATPase activity. Unwinds DNA duplexes with 3' to 5' polarity with respect to the bound strand. Initiates unwinding more efficiently from a nicked substrate than ds duplex DNA. Involved in the post-incision events of nucleotide excision repair and methyl-directed mismatch repair, and probably also in repair of alkylated DNA |
| Abbreviation | Recombinant E.coli uvrD protein |
| Storage | The shelf life is related to many factors, storage state, buffer ingredients, storage temperature and the stability of the protein itself. Generally, the shelf life of liquid form is 6 months at -20°C/-80°C. The shelf life of lyophilized form is 12 months at -20°C/-80°C. |
| Uniprot No. | P03018 |
| Product Type | Recombinant Protein |
| Immunogen Species | Escherichia coli (strain K12) |
| Purity | Greater than 85% as determined by SDS-PAGE. |
| Sequence | MDVSYLLDSLNDKQREAVAAPRSNLLVLAGAGSGKTRVLVHRIAWLMSVENC SPYSIMAVTFTNKAAAEMRHRIGQLMGTSQGGMWVGTFFHGLAHRLLRAHMH DANLPQDFQILDSEDQLRLLKRLIKAMNLDEKQWPPRQAMWYINSQKDEGLR PHHIQSYGNPVEQTWQKVYQAYQEACDRAGLVDFAEALLRAHELWLNKPHIL QHYRERFTNILVDEFQDTNNIQYAWIRLLAGDTGKVMIVGDDDQSIYGWRGAQ VENIQRFLNDFPGAETIRLEQNYRSTSNILSAANALIENNGRLGKKLWTDGAD GEPISLYCAFNELDEARFVVNRIKTWQDNGGALAECAILYRSNAQSRVLEEALL QASMPYRIYGGMRFFERQEIKDALSYLRLIANRNDDAAFERVVNTPTRGIGDR TLDVVRQTSRDRQLTLWQACRELLQEALAGRAASALQRFMELIDALAQETAD MPLHVQTDRVIKDSGLRRTMYEQEKGEKGQTRIVENLEELVTATRQFSYNEEDED LMPLQAFLSHAALEAGEGQADTWQDAVQLMTHSAKGLEFPQVFIVGMEEGM FPSQMSLDEGGRLEEERLAYVGVTRAMQKLTLYAETRRLYGKEYVHRPSR FIGELPEECVVEEVRRLRATVSRPVSHQRMGTPMVENDSGYKLGQRVRHAKFGE GTIVNMEGSGEHSRLQVAFQGGQIKWLVAAYARLESV |
| Research Area | Others |
| Source | E.coli |
| Target Names | uvrD |
| Protein Names | mutU, pdeB, rad, recL |
| Expression Region | 1-720aa |
| Notes | Repeated freezing and thawing is not recommended. Store working aliquots at 4°C for up to one week. |
| Tag Info | Tag-Free |



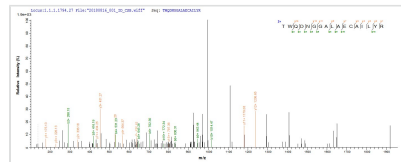
Mol. Weight 82.0 kDa

Protein Length Full Length

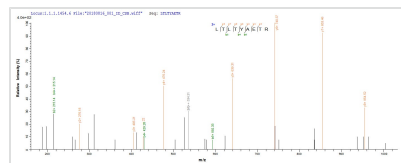
Image



(Tris-Glycine gel) Discontinuous SDS-PAGE (reduced) with 5% enrichment gel and 15% separation gel.



Based on the SEQUEST from database of E.coli host and target protein, the LC-MS/MS Analysis result of CSB-EP360936ENV could indicate that this peptide derived from E.coli-expressed Escherichia coli (strain K12) uvrD.



Based on the SEQUEST from database of E.coli host and target protein, the LC-MS/MS Analysis result of CSB-EP360936ENV could indicate that this peptide derived from E.coli-expressed Escherichia coli (strain K12) uvrD.

Reconstitution

We recommend that this vial be briefly centrifuged prior to opening to bring the contents to the bottom. Please reconstitute protein in deionized sterile water to a concentration of 0.1-1.0 mg/mL. We recommend to add 5-50% of glycerol (final concentration) and aliquot for long-term storage at -20°C/-80°C. Our default final concentration of glycerol is 50%. Customers could use it as reference.

Shelf Life

The shelf life is related to many factors, storage state, buffer ingredients, storage temperature and the stability of the protein itself. Generally, the shelf life of liquid form is 6 months at -20°C/-80°C. The shelf life of lyophilized form is 12 months at -20°C/-80°C.