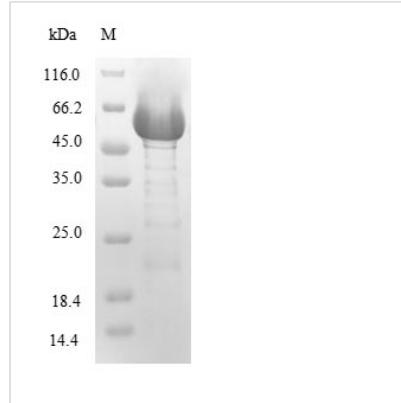


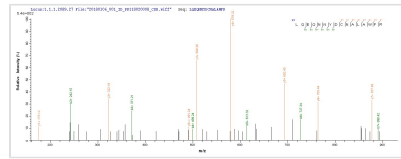


Recombinant *Pseudomonas aeruginosa* Hemolytic phospholipase C (plcH), partial

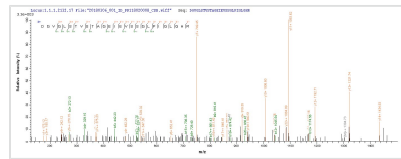
Product Code	CSB-EP361746EZ
Relevance	Hydrolyzes sphingomyelin in addition to phosphatidylcholine.
Abbreviation	Recombinant <i>Pseudomonas aeruginosa</i> plcH protein, partial
Storage	The shelf life is related to many factors, storage state, buffer ingredients, storage temperature and the stability of the protein itself. Generally, the shelf life of liquid form is 6 months at -20°C/-80°C. The shelf life of lyophilized form is 12 months at -20°C/-80°C.
Uniprot No.	P06200
Storage Buffer	Tris-based buffer, 50% glycerol
Product Type	Recombinant Proteins
Immunogen Species	<i>Pseudomonas aeruginosa</i> (strain ATCC 15692 / DSM 22644 / CIP 104116 / JCM 14847 / LMG)
Purity	Greater than 85% as determined by SDS-PAGE.
Sequence	VQHVVILMQENRSFDHYFGHLNGVIRGFNDPRALKRQDGKPVWYQNYKYEFS PYHWDTKVTSAQWVSSQNHWSAFHAIWNQGRNDKWMVAVQYPEAMGYFK RGDIPYYALADAFTLCEAYHQSMMGPTNPNRLYHMSGRAAPSGDGKDVHIG NDMGDGTIGASGTVDWTTYPERSAAGVDWRVYQEGGYRSSLWYLYVDAY WKYRLQEQNNYDCNALAWFRNFKNAPRDSDLWQRAMLARGVDQLRKDVQE NTLPQVSWIVAPYCYCEHPWWGPSFGEYYVTRVLEALTSNPEVWARTVFILN YDEGDGFYDHASAPVPPWKDGVGLSTVSTAGEIEVSSGLPIGLGHRVPLIAISP WSKGGKVS AEVFDHTSVLRFLERRFGV
Research Area	others
Source	<i>E. coli</i>
Target Names	plcH
Protein Names	Heat-labile hemolysin PLC-HP phosphatidylcholine cholinephosphohydrolase
Expression Region	51-436aa
Notes	Repeated freezing and thawing is not recommended. Store working aliquots at 4°C for up to one week.
Tag Info	N-terminal 10xHis-SUMO-tagged and C-terminal Myc-tagged
Mol. Weight	64.3kDa
Protein Length	Partial
Image	



(Tris-Glycine gel) Discontinuous SDS-PAGE (reduced) with 5% enrichment gel and 15% separation gel.



Based on the SEQUEST from database of E.coli host and target protein, the LC-MS/MS Analysis result of CSB-EP361746EZC could indicate that this peptide derived from E.coli-expressed *Pseudomonas aeruginosa* (strain ATCC 15692 / DSM 22644 / CIP 104116 / JCM 14847 / LMG) plcH.



Based on the SEQUEST from database of E.coli host and target protein, the LC-MS/MS Analysis result of CSB-EP361746EZC could indicate that this peptide derived from E.coli-expressed *Pseudomonas aeruginosa* (strain ATCC 15692 / DSM 22644 / CIP 104116 / JCM 14847 / LMG) plcH.

Shelf Life

The shelf life is related to many factors, storage state, buffer ingredients, storage temperature and the stability of the protein itself.

Generally, the shelf life of liquid form is 6 months at -20°C/-80°C. The shelf life of lyophilized form is 12 months at -20°C/-80°C.