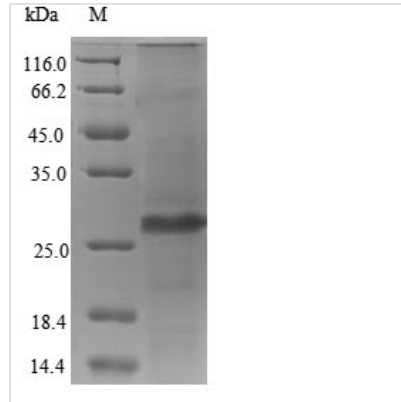


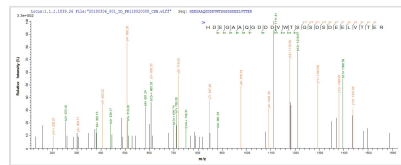


Recombinant Human cytomegalovirus 65 kDa phosphoprotein (UL83), partial

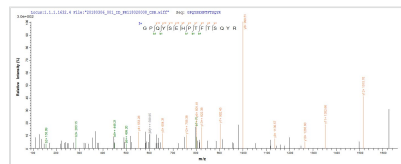
Product Code	CSB-EP361930HWV
Relevance	Counteracts the host antiviral immune response when activated and phosphorylated, by preventing IRF3 from entering the nucleus. Also participates in the transactivation of viral major immediate-early genes by the recruitment of host IFI16 to the promoters of these genes.
Abbreviation	Recombinant Human cytomegalovirus UL83 protein, partial
Storage	The shelf life is related to many factors, storage state, buffer ingredients, storage temperature and the stability of the protein itself. Generally, the shelf life of liquid form is 6 months at -20°C/-80°C. The shelf life of lyophilized form is 12 months at -20°C/-80°C.
Uniprot No.	P06725
Alias	65 kDa matrix phosphoprotein Phosphoprotein UL83 Tegument protein UL83
Product Type	Recombinant Protein
Immunogen Species	Human cytomegalovirus (strain AD169) (HHV-5) (Human herpesvirus 5)
Purity	≥ 90% as determined by SDS-PAGE.
Sequence	FDIDLLLQRGPPQYSEHPTFTSQYRIQGGKLEYRHTWDRHDEGAAQGDDVVWTS GSDSDEELVTTERKTPRVTTGGGAMAGASTSAGRKRKSASSATACTSGVMTR GRLKAESTVAPEEDTDESDNEIHNP
Research Area	Microbiology
Source	E.coli
Target Names	UL83
Protein Names	Recommended name: 65 kDa phosphoprotein Short name= pp65 Alternative name(s): 65 kDa matrix phosphoprotein Phosphoprotein UL83 Tegument protein UL83
Expression Region	351-480
Notes	Repeated freezing and thawing is not recommended. Store working aliquots at 4°C for up to one week.
Tag Info	N-terminal 6xHis-tagged
Mol. Weight	18.2kDa
Protein Length	Partial
Image	



(Tris-Glycine gel) Discontinuous SDS-PAGE (reduced) with 5% enrichment gel and 15% separation gel.



Based on the SEQUEST from database of E.coli host and target protein, the LC-MS/MS Analysis result of CSB-EP361930HWV could indicate that this peptide derived from E.coli-expressed Human cytomegalovirus (strain AD169) (HHV-5) (Human herpesvirus 5) UL83.



Based on the SEQUEST from database of E.coli host and target protein, the LC-MS/MS Analysis result of CSB-EP361930HWV could indicate that this peptide derived from E.coli-expressed Human cytomegalovirus (strain AD169) (HHV-5) (Human herpesvirus 5) UL83.

Reconstitution

We recommend that this vial be briefly centrifuged prior to opening to bring the contents to the bottom. Please reconstitute protein in deionized sterile water to a concentration of 0.1-1.0 mg/mL. We recommend to add 5-50% of glycerol (final concentration) and aliquot for long-term storage at -20°C/-80°C. Our default final concentration of glycerol is 50%. Customers could use it as reference.

Shelf Life

The shelf life is related to many factors, storage state, buffer ingredients, storage temperature and the stability of the protein itself.

Generally, the shelf life of liquid form is 6 months at -20°C/-80°C. The shelf life of lyophilized form is 12 months at -20°C/-80°C.