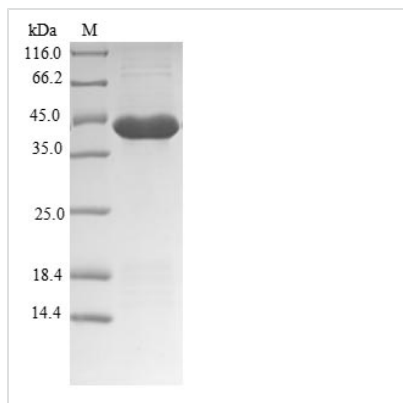




Recombinant Dog Serine protease 1 (PRSS1)

Product Code	CSB-EP361971DO
Relevance	Preferential cleavage: Arg- -Xaa, Lys- -Xaa.
Abbreviation	Recombinant Dog PRSS1 protein
Storage	The shelf life is related to many factors, storage state, buffer ingredients, storage temperature and the stability of the protein itself. Generally, the shelf life of liquid form is 6 months at -20°C/-80°C. The shelf life of lyophilized form is 12 months at -20°C/-80°C.
Uniprot No.	P06871
Product Type	Recombinant Proteins
Immunogen Species	Canis lupus familiaris (Dog) (Canis familiaris)
Purity	≥ 90% as determined by SDS-PAGE.
Sequence	IVGGYTCSRNSVPYQVSLNSGYHFCGGSLINSQWVVSAAHCYKSRIQVRLGE YNIADVSEGGEQFINAAKIIRHPRYNANTIDNDIMLIKLSPPATLNSRVSAIALPKSC PAAGTQCLISGWGNTQSIGQNYPDVLQCLKAPILSDSVCRNAYPGQISSNMMC LGYMEGGKDCSCQGDSGGPVVVCNGELQGVVSWGAGCAQKKGKPGVSPKVCK YVSWIQQTIAAN
Research Area	others
Source	E.coli
Target Names	N/A
Protein Names	Recommended name: Cationic trypsin EC= 3.4.21.4
Expression Region	24-246aa
Notes	Repeated freezing and thawing is not recommended. Store working aliquots at 4°C for up to one week.
Tag Info	N-terminal 6xHis-SUMO-tagged
Mol. Weight	39.6kDa
Protein Length	Full Length of Mature Protein

Image



(Tris-Glycine gel) Discontinuous SDS-PAGE (reduced) with 5% enrichment gel and 15% separation gel.



Shelf Life

The shelf life is related to many factors, storage state, buffer ingredients, storage temperature and the stability of the protein itself.

Generally, the shelf life of liquid form is 6 months at -20°C/-80°C. The shelf life of lyophilized form is 12 months at -20°C/-80°C.