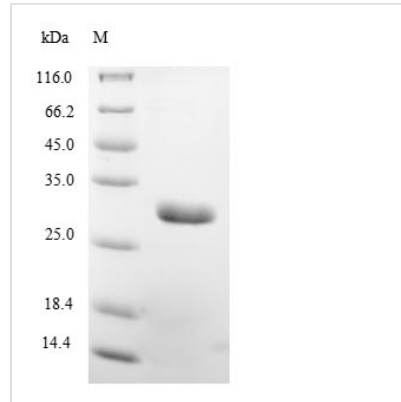




# Recombinant Borreliella burgdorferi Outer surface protein A (ospA)

<b>Product Code</b>	CSB-EP363424BIO
<b>Abbreviation</b>	Recombinant Borreliella burgdorferi ospA protein
<b>Storage</b>	The shelf life is related to many factors, storage state, buffer ingredients, storage temperature and the stability of the protein itself. Generally, the shelf life of liquid form is 6 months at -20°C/-80°C. The shelf life of lyophilized form is 12 months at -20°C/-80°C.
<b>Uniprot No.</b>	P0A3N6
<b>Storage Buffer</b>	Tris-based buffer,50% glycerol
<b>Product Type</b>	Recombinant Proteins
<b>Immunogen Species</b>	Borreliella burgdorferi (Lyme disease spirochete) (Borrelia burgdorferi)
<b>Purity</b>	Greater than 85% as determined by SDS-PAGE.
<b>Sequence</b>	CKQNVSSLDEKNSASVDLPGEMKVLVSKEKDKDGKYSKATVDKIELKGTSDK DNGSGVLEGTKDDKSKAKLTIADDLSKTTFELFKEDGKTLVSRKVSSKDKTSTD EMFNEKGELSAKTM TRENGTKLEYTEMKSDGTGKAKEVLKNFTLEGKVANDK VTLEVKEGTVLSKEIAKSGEVTVALNDTNTTQATKKTGAWDSKTSTLTISVNS KKTQLVFTKQDTITVQKYDSAGTNLEGTAVEIKTLDELKNALK
<b>Research Area</b>	others
<b>Source</b>	E.coli
<b>Target Names</b>	ospA
<b>Protein Names</b>	Recommended name: Outer surface protein A
<b>Expression Region</b>	17-273aa
<b>Notes</b>	Repeated freezing and thawing is not recommended. Store working aliquots at 4°C for up to one week.
<b>Tag Info</b>	N-terminal 10xHis-tagged and C-terminal Myc-tagged
<b>Mol. Weight</b>	32.9 kDa
<b>Protein Length</b>	Full Length of Mature Protein
<b>Image</b>	



(Tris-Glycine gel) Discontinuous SDS-PAGE (reduced) with 5% enrichment gel and 15% separation gel.

### Shelf Life

The shelf life is related to many factors, storage state, buffer ingredients, storage temperature and the stability of the protein itself.

Generally, the shelf life of liquid form is 6 months at -20°C/-80°C. The shelf life of lyophilized form is 12 months at -20°C/-80°C.