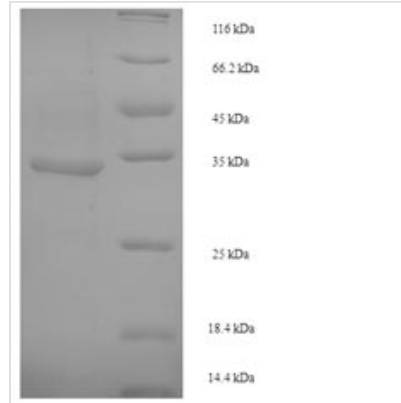




Recombinant Escherichia coli Crossover junction endodeoxyribonuclease RuvC (ruvC)

Product Code	CSB-EP364095ENV
Relevance	Nuclease that resolves Holliday junction intermediates in genetic recombination. Cleaves the cruciform structure in supercoiled DNA by nicking to strands with the same polarity at sites symmetrically opposed at the junction in the homologous arms and leaves a 5'-terminal phosphate and a 3'-terminal hydroxyl group.
Abbreviation	Recombinant E.coli ruvC protein
Storage	The shelf life is related to many factors, storage state, buffer ingredients, storage temperature and the stability of the protein itself. Generally, the shelf life of liquid form is 6 months at -20°C/-80°C. The shelf life of lyophilized form is 12 months at -20°C/-80°C.
Uniprot No.	P0A814
Alias	Holliday junction nuclease RuvC Holliday junction resolvase RuvC
Product Type	Recombinant Protein
Immunogen Species	Escherichia coli (strain K12)
Purity	≥ 90% as determined by SDS-PAGE.
Sequence	AIIILGIDPGSRVTGYGVIRQVGRQLSYLGSGCIRTKVDDLPSRLKLIYAGVTEIIT QFQPDYFAIEQVFMKNADSALKLGGQARGVAIVA AVNQELPVFEYAARQVKQT VVGIGSAEKSQVQH MVRTLKLPANPQADAADALAIATHCHVSQNAMQMSES RLNLARGRLR
Research Area	Others
Source	E.coli
Target Names	ruvC
Protein Names	Recommended name: Crossover junction endodeoxyribonuclease RuvC EC= 3.1.22.4 Alternative name(s): Holliday junction nuclease RuvC Holliday junction resolvase RuvC
Expression Region	2-173aa
Notes	Repeated freezing and thawing is not recommended. Store working aliquots at 4°C for up to one week.
Tag Info	N-terminal 6xHis-SUMO-tagged
Mol. Weight	34.6kDa
Protein Length	Full Length of Mature Protein
Image	



(Tris-Glycine gel) Discontinuous SDS-PAGE (reduced) with 5% enrichment gel and 15% separation gel.

Reconstitution

We recommend that this vial be briefly centrifuged prior to opening to bring the contents to the bottom. Please reconstitute protein in deionized sterile water to a concentration of 0.1-1.0 mg/mL. We recommend to add 5-50% of glycerol (final concentration) and aliquot for long-term storage at -20°C/-80°C. Our default final concentration of glycerol is 50%. Customers could use it as reference.

Shelf Life

The shelf life is related to many factors, storage state, buffer ingredients, storage temperature and the stability of the protein itself. Generally, the shelf life of liquid form is 6 months at -20°C/-80°C. The shelf life of lyophilized form is 12 months at -20°C/-80°C.