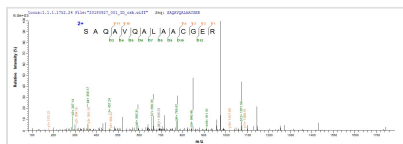




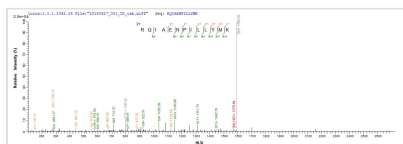
Recombinant *Shigella flexneri* Glutaredoxin-4 (grxD)

Product Code	CSB-EP364758SZB
Abbreviation	Recombinant <i>Shigella flexneri</i> grxD protein
Storage	The shelf life is related to many factors, storage state, buffer ingredients, storage temperature and the stability of the protein itself. Generally, the shelf life of liquid form is 6 months at -20°C/-80°C. The shelf life of lyophilized form is 12 months at -20°C/-80°C.
Uniprot No.	P0AC72
Product Type	Recombinant Protein
Immunogen Species	<i>Shigella flexneri</i>
Purity	Greater than 85% as determined by SDS-PAGE.
Sequence	MSTTIEKIQRQIAENPILLYMKGSPKLPSCGFSAQAVQALAACGERFAYVDILQN PDIRAE LPKYANWPTFPQLWVDGELVGGCDIVIEMYQRGELQQLIKETAAYK SEEPDAE
Research Area	Cell Biology
Source	E.coli
Target Names	grxD
Protein Names	Recommended name: Glutaredoxin-4 Short name= Grx4Alternative name(s): Monothiol glutaredoxin
Expression Region	1-115aa
Notes	Repeated freezing and thawing is not recommended. Store working aliquots at 4°C for up to one week.
Tag Info	N-terminal 6xHis-SUMO-tagged
Mol. Weight	28.9 kDa
Protein Length	Full Length

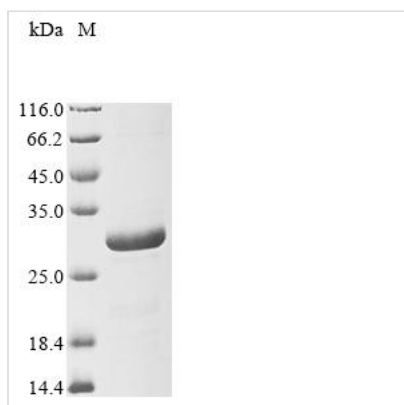
Image



Based on the SEQUEST from database of E.coli host and target protein, the LC-MS/MS Analysis result of CSB-EP364758SZB could indicate that this peptide derived from E.coli-expressed *Shigella flexneri* grxD.



Based on the SEQUEST from database of E.coli host and target protein, the LC-MS/MS Analysis result of CSB-EP364758SZB could indicate that this peptide derived from E.coli-expressed *Shigella flexneri* grxD.



(Tris-Glycine gel) Discontinuous SDS-PAGE (reduced) with 5% enrichment gel and 15% separation gel.

Reconstitution

We recommend that this vial be briefly centrifuged prior to opening to bring the contents to the bottom. Please reconstitute protein in deionized sterile water to a concentration of 0.1-1.0 mg/mL. We recommend to add 5-50% of glycerol (final concentration) and aliquot for long-term storage at $-20^{\circ}\text{C}/-80^{\circ}\text{C}$. Our default final concentration of glycerol is 50%. Customers could use it as reference.

Shelf Life

The shelf life is related to many factors, storage state, buffer ingredients, storage temperature and the stability of the protein itself. Generally, the shelf life of liquid form is 6 months at $-20^{\circ}\text{C}/-80^{\circ}\text{C}$. The shelf life of lyophilized form is 12 months at $-20^{\circ}\text{C}/-80^{\circ}\text{C}$.