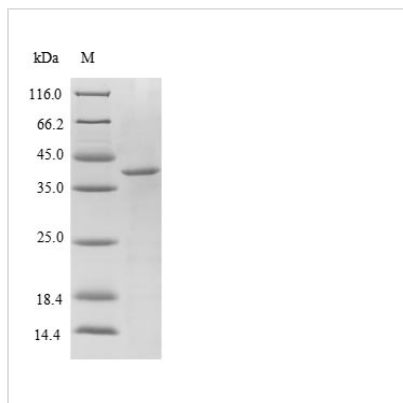




# Recombinant Escherichia coli O6:H1 Peptidyl-prolyl cis-trans isomerase A (ppiA)

<b>Product Code</b>	CSB-EP365318EGX
<b>Relevance</b>	PPIases accelerate the folding of proteins. It catalyzes the cis-trans isomerization of proline imidic peptide bonds in oligopeptides
<b>Abbreviation</b>	Recombinant E.coli O6:H1 ppiA protein
<b>Storage</b>	The shelf life is related to many factors, storage state, buffer ingredients, storage temperature and the stability of the protein itself. Generally, the shelf life of liquid form is 6 months at -20°C/-80°C. The shelf life of lyophilized form is 12 months at -20°C/-80°C.
<b>Uniprot No.</b>	P0AFL4
<b>Alias</b>	Cyclophilin A Rotamase A
<b>Product Type</b>	Recombinant Protein
<b>Immunogen Species</b>	Escherichia coli O6:H1 (strain CFT073 / ATCC 700928 / UPEC)
<b>Purity</b>	≥ 85% as determined by SDS-PAGE.
<b>Sequence</b>	AKGDPHVLLTTSAGNIELELDKQKAPVSVQNFVDYVNSGFYNNTTFHRVIPGF MIQGGGFTEQMQQKKNPPIKNEADNGLRNTRGTIAMARTADKDSATSQFFIN VADNAFLDHGQRDFGYAVFGKVVKGMDVADKISQVPTHVGPYQNVPSKPV VILSAKVLP
<b>Research Area</b>	Immunology
<b>Source</b>	E.coli
<b>Target Names</b>	ppiA
<b>Protein Names</b>	Recommended name: Peptidyl-prolyl cis-trans isomerase A Short name= PPIase A EC= 5.2.1.8 Alternative name(s): Cyclophilin A Rotamase A
<b>Expression Region</b>	25-190aa
<b>Notes</b>	Repeated freezing and thawing is not recommended. Store working aliquots at 4°C for up to one week.
<b>Tag Info</b>	N-terminal 10xHis-SUMO-tagged and C-terminal Myc-tagged
<b>Mol. Weight</b>	38.1kDa
<b>Protein Length</b>	Full Length of Mature Protein
<b>Image</b>	



(Tris-Glycine gel) Discontinuous SDS-PAGE (reduced) with 5% enrichment gel and 15% separation gel.

### Reconstitution

We recommend that this vial be briefly centrifuged prior to opening to bring the contents to the bottom. Please reconstitute protein in deionized sterile water to a concentration of 0.1-1.0 mg/mL. We recommend to add 5-50% of glycerol (final concentration) and aliquot for long-term storage at -20°C/-80°C. Our default final concentration of glycerol is 50%. Customers could use it as reference.

### Shelf Life

The shelf life is related to many factors, storage state, buffer ingredients, storage temperature and the stability of the protein itself. Generally, the shelf life of liquid form is 6 months at -20°C/-80°C. The shelf life of lyophilized form is 12 months at -20°C/-80°C.