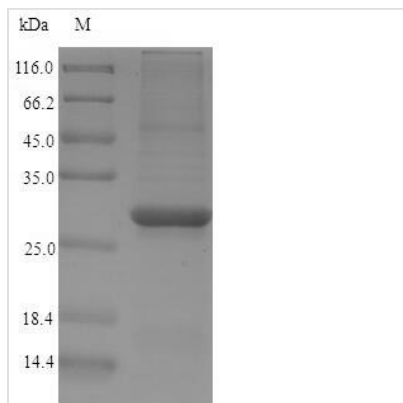




Recombinant Carica papaya Papain

| | |
|--------------------------|---|
| Product Code | CSB-EP365471DQH |
| Relevance | Catalytic activity Hydrolysis of proteins with broad specificity for peptide bonds, but preference for an amino acid bearing a large hydrophobic side chain at the P2 position. Does not accept Val in P1'. |
| Abbreviation | Recombinant Carica papaya Papain protein |
| Storage | The shelf life is related to many factors, storage state, buffer ingredients, storage temperature and the stability of the protein itself. Generally, the shelf life of liquid form is 6 months at -20°C/-80°C. The shelf life of lyophilized form is 12 months at -20°C/-80°C. |
| Uniprot No. | P00784 |
| Alias | Papaya proteinase I Short name:PPI |
| Product Type | Recombinant Protein |
| Immunogen Species | Carica papaya (Papaya) |
| Purity | Greater than 90% as determined by SDS-PAGE. |
| Sequence | IPEYVDWRQKGAVTPVKNQGSCGSCWAFSAVVTIEGIIKIRTGNLNEYSEQELL DCDRRSYGCNGGYPWSALQLVAQYGIHYRNTYPYEGVQRYCRSREKGPYAA KTDGVRQVQPYNEGALLYSIANQPVSVVLEAAGKDFQLYRGGIFVGPCKGNKV DHAVAAVGYGPNYILIKNSWGTGWGENGYIRIKRGTGNSYGVCGLYTSSFPV KN |
| Research Area | Allergen |
| Source | E.coli |
| Protein Names | Recommended name: Papain EC= 3.4.22.2 Alternative name(s): Papaya proteinase I Short name= PPI Allergen= Car p 1 |
| Expression Region | 134-345aa |
| Notes | Repeated freezing and thawing is not recommended. Store working aliquots at 4°C for up to one week. |
| Tag Info | N-terminal 6xHis-tagged |
| Mol. Weight | 27.4kDa |
| Protein Length | Full Length of Mature Protein |
| Image | |



(Tris-Glycine gel) Discontinuous SDS-PAGE (reduced) with 5% enrichment gel and 15% separation gel.

Reconstitution

We recommend that this vial be briefly centrifuged prior to opening to bring the contents to the bottom. Please reconstitute protein in deionized sterile water to a concentration of 0.1-1.0 mg/mL. We recommend to add 5-50% of glycerol (final concentration) and aliquot for long-term storage at -20°C/-80°C. Our default final concentration of glycerol is 50%. Customers could use it as reference.

Shelf Life

The shelf life is related to many factors, storage state, buffer ingredients, storage temperature and the stability of the protein itself. Generally, the shelf life of liquid form is 6 months at -20°C/-80°C. The shelf life of lyophilized form is 12 months at -20°C/-80°C.